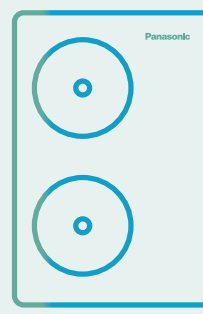
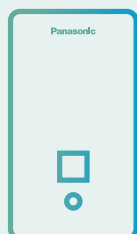


Fan-coil Price List 2022 / 2023

* This price list is showing recommended NET end-user prices. The prices are without VAT. The price list is valid from 01.11.2022. until 03.31.2023. or until withdrawal. Panasonic keeps the right to modify the prices without any prior notice.



Explore the new range of fan coils. Designed to fit with your environment and enhance comfort

Designed to provide performance, comfort and seamless integration within your environment



Fan coils highlighted features.
Available in a wide range of designs, the fan coils are perfectly adapted to fit within almost any location.



1 Innovation for an optimum comfort
Range of fan coils for heating and cooling with capacities from 0,5 to 21,9 kW in cooling and from 0,6 to 21,5 kW in heating. Bring full year comfort with water based systems.

2 Energy efficient and low noise fan
Dynamically balanced and specially designed fans, reinforced acoustic insulation and optimised fan speed staging for lower noise levels. Improved efficiency with optional EC fan motor.

3 Quality and efficient coil
Constructed from staggered copper tubes, mechanically expanded into aluminium fins, providing maximum heat transfer efficiency, durability and hygiene.

4 Flexible installation
Various types of unit to fit your needs with flexible installation options. A choice of service side for hydraulic connections, piping configuration and horizontal or vertical installation for ducted units.

Offering a great range of capacities and performance, available in a wide range of designs, the fan coils are perfectly adapted to fit within almost any location. Whether the requirements are for cooling only, or for both heating and cooling, there is a fan coil to suit. With a variety of piping and fan configuration, the range is capable of meeting the most stringent of requirements. Line up available in AC and EC fans, it is possible to achieve both powerful performance, but with sustainability in mind.

Controllers with sophisticated designs, provide a user friendly interface while enabling an easy and low cost integration to building management systems.

Optional wired remote controller for AC fan, 2-pipe and 4-pipe application.



PAW-FC-RC1

Optional wired remote controller for AC fan 2-pipe application.



PAW-FC-903AC



PAW-FC-907AC

Optional wired remote controller for EC fan, 2-pipe and 4-pipe application.






PAW-FC-903EC



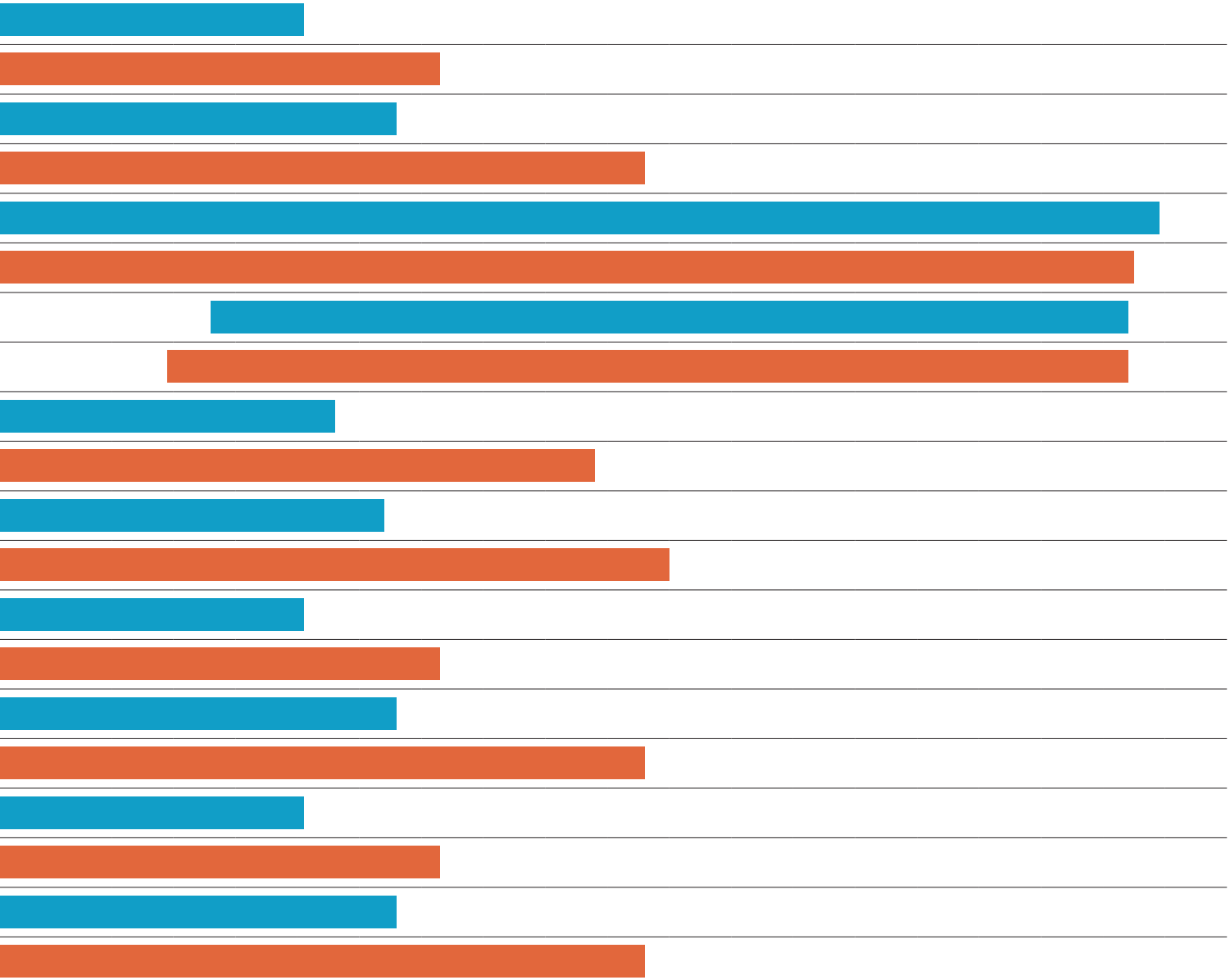
PAW-FC-907EC

Range of fan coils

Page	Indoor units	Fan Type	Operation	Capacity range	0 kW	1 kW	2 kW	3 kW	4 kW
Page 6		AC	Cooling	0,7 to 8,1 kW	[Blue bar]				
			Heating	0,7 to 10,3 kW	[Orange bar]				
		EC	Cooling	0,5 to 9,6 kW	[Blue bar]				
			Heating	0,6 to 13,6 kW	[Orange bar]				
Page 8		AC	Cooling	4,1 to 21,9 kW	[Blue bar]				[Blue bar]
			Heating	4,7 to 21,5 kW	[Orange bar]				[Orange bar]
		EC	Cooling	6,6 to 21,4 kW	[Blue bar]				
			Heating	5,9 to 21,4 kW	[Orange bar]				
Page 10		AC	Cooling	1.4 to 8,6 kW	[Blue bar]				[Blue bar]
			Heating	1,1 to 12,8 kW	[Orange bar]				[Orange bar]
		EC	Cooling	1,4 to 9,4 kW	[Blue bar]				[Blue bar]
			Heating	1,1 to 14,0 kW	[Orange bar]				[Orange bar]
Page 12		AC	Cooling	0,7 to 8,1 kW	[Blue bar]				
			Heating	0,7 to 10,3 kW	[Orange bar]				
		EC	Cooling	0,5 to 9,6 kW	[Blue bar]				
			Heating	0,6 to 13,6 kW	[Orange bar]				
Page 14		AC	Cooling	0,7 to 8,1 kW	[Blue bar]				
			Heating	0,7 to 10,3 kW	[Orange bar]				
		EC	Cooling	0,5 to 9,6 kW	[Blue bar]				
			Heating	0,6 to 13,6 kW	[Orange bar]				
Page 16		AC	Cooling	1,0 to 3,9 kW	[Blue bar]				[Blue bar]
			Heating	1,4 to 4,1 kW	[Orange bar]				[Orange bar]
Page 17		AC	Cooling	0,2 to 1,7 kW	[Blue bar]				[Blue bar]
			Heating	0,2 to 1,7 kW	[Orange bar]				[Orange bar]

Values indicated are for the full operating range. The data shown within the tables following are indicative of specific installation conditions. For full details relating to performance and operating conditions, please refer to the technical data manual.

5 kW 6 kW 7 kW 8 kW 9 kW 10kW 11kW 12kW 13kW 14kW 15kW 16kW 17kW 18kW 19kW 20kW 21kW 22kW



Fan coils - ducted (AC)



Optional controller. Advanced wired remote controller. PAW-FC-RC1



Optional controller. Wired remote controller with touch control. PAW-FC-907AC



Optional controller. Wired remote controller. PAW-FC-903AC

2-pipe - Left connection (PAW-)			FC2A-D010L	FC2A-D020L	FC2A-D030L	FC2A-D040L	FC2A-D050L	FC2A-D060L	FC2A-D070L	FC2A-D080L
2-pipe - Right connection (PAW-)			FC2A-D010R	FC2A-D020R	FC2A-D030R	FC2A-D040R	FC2A-D050R	FC2A-D060R	FC2A-D070R	FC2A-D080R
Total cooling capacity ¹⁾	Lo/Med/Hi	kW	0,7/1,0/1,5	0,7/1,2/1,7	1,0/2,0/2,5	1,2/2,4/3,2	1,7/3,2/4,6	2,7/4,6/5,8	3,4/6,1/7,3	4,6/6,1/8,1
Sensible cooling capacity ¹⁾	Lo/Med/Hi	kW	0,5/0,8/1,1	0,6/0,9/1,3	0,8/1,5/1,9	0,9/1,8/2,3	1,2/2,2/3,3	1,9/3,3/4,5	2,4/4,3/5,1	3,4/4,6/6,3
Water flow	Lo/Med/Hi	l/h	124/172/250	127/213/289	172/341/430	206/413/547	296/544/798	466/784/1003	587/1058/1252	798/1048/1400
Water pressure drop	Lo/Med/Hi	kPa	10,7/19,5/39,2	1,9/3,9/6,3	6,3/19,3/28,8	5,4/17,1/28,0	7,5/22,8/46,9	13,9/37,4/60,2	4,8/15,4/21,5	11,9/19,3/32,5
Heating capacity ²⁾	Lo/Med/Hi	kW	0,9/1,4/2,0	0,9/1,5/2,2	1,3/2,4/3,1	1,4/2,9/4,0	2,1/4,1/5,7	3,1/5,3/7,1	4,3/7,9/9,3	5,9/8,1/11,6
4-pipe - Left connection (PAW-)			FC4A-D010L	FC4A-D020L	FC4A-D030L	FC4A-D040L	FC4A-D050L	FC4A-D060L	FC4A-D070L	FC4A-D080L
4-pipe - Right connection (PAW-)			FC4A-D010R	FC4A-D020R	FC4A-D030R	FC4A-D040R	FC4A-D050R	FC4A-D060R	FC4A-D070R	FC4A-D080R
Total cooling capacity ¹⁾	Lo/Med/Hi	kW	0,7/0,9/1,3	0,6/1,1/1,6	1,0/1,9/2,4	1,1/2,3/3,0	1,7/3,0/4,3	2,6/4,4/5,6	3,3/5,9/6,9	4,5/5,9/8,0
Sensible cooling capacity ¹⁾	Lo/Med/Hi	kW	0,5/0,7/1,0	0,5/0,8/1,2	0,8/1,5/1,8	0,8/1,7/2,2	1,2/2,2/3,1	1,8/3,2/4,3	2,3/4,2/4,9	3,3/4,4/6,2
Water flow	Lo/Med/Hi	l/h	114/159/225	109/192/268	165/327/414	194/388/517	284/522/748	449/756/967	575/1019/1193	775/1020/1380
Water pressure drop	Lo/Med/Hi	kPa	8,3/15,2/29,0	1,5/3,4/5,6	3,0/9,5/14,4	6,4/22,3/36,8	4,2/12,8/25,1	10,2/27,7/44,5	5,9/17,9/24,4	19,3/31,1/53,6
Heating capacity ²⁾	Lo/Med/Hi	kW	0,5/0,7/1,0	0,6/0,9/1,1	1,0/1,4/1,6	0,9/1,6/2,1	1,5/2,3/3,0	1,9/2,9/3,7	2,7/3,6/4,3	3,9/5,6/7,1
Water flow	Lo/Med/Hi	l/h	79/127/178	100/146/190	164/232/274	160/273/354	251/401/508	325/505/633	456/626/736	673/963/1226
Water pressure drop	Lo/Med/Hi	kPa	1,9/3,5/5,6	1,5/3,2/5,3	5,1/9,0/11,9	9,2/26,5/42,7	10,7/24,6/29,5	20,3/43,9/52,9	67,2/117,9/137,8	33,1/63,7/75
Sound levels										
Global sound power	Lo/Med/Hi	dB(A)	33/40/49	31/43/50	30/45/52	30/44/51	34/46/56	38/51/58	43/56/61	50/55/64
Global sound pressure ³⁾	Lo/Med/Hi	dB(A)	24/31/40	22/34/41	21/36/43	21/35/42	25/37/47	29/42/49	34/47/52	41/46/55
Fan										
Number			1	1	1	2	2	2	2	3
Air flow 2-pipe	Lo/Med/Hi	m³/h	111/190/283	105/179/265	138/274/390	173/357/499	253/486/716	350/640/933	480/893/1064	660/936/1397
Air flow 4-pipe	Lo/Med/Hi	m³/h	95/168/253	89/161/241	132/263/369	162/335/467	242/466/671	334/614/885	470/859/1012	634/905/1370
Maximum external pressure		Pa	55	55	65	85	85	115	125	70
Filter			G2	G2	G2	G2	G2	G2	G2	G2
Electrical data										
Power supply	Voltage	V	230	230	230	230	230	230	230	230
	Phase		Single phase	Single phase	Single phase	Single phase	Single phase	Single phase	Single phase	Single phase
	Frequency	Hz	50/60	50/60	50/60	50/60	50/60	50/60	50/60	50/60
Power consumption 2-pipe	Lo/Med/Hi	W	13/24/36	10/18/29	16/37/45	15/37/56	28/55/72	37/75/105	53/100/147	90/112/188
Power consumption 4-pipe	Lo/Med/Hi	W	13/24/36	10/18/28	16/37/44	15/37/55	28/54/70	37/74/104	53/99/145	90/112/188
Water connections										
Type			Female gas threaded	Female gas threaded	Female gas threaded	Female gas threaded	Female gas threaded	Female gas threaded	Female gas threaded	Female gas threaded
2-pipe		Inch	1/2	1/2	1/2	1/2	1/2	1/2	3/4	3/4
	Cooling	Inch	1/2	1/2	1/2	1/2	1/2	1/2	3/4	3/4
4-pipe	Heating	Inch	1/2	1/2	1/2	1/2	1/2	1/2	1/2	1/2
Dimension and weight										
Dimension	H x W x D	mm	220 x 570 x 430	220 x 570 x 430	220 x 730 x 430	220 x 938 x 430	220 x 1122 x 430	220 x 1307 x 430	220 x 1121 x 530	220 x 1316 x 530
Weight	2 / 4-pipes	kg	13/14	13/14	15/16	20/22	22/24	26/28	27/29	38/40
2-pipe RRP		€	363	376	401	462	525	575	650	937
4-pipe RRP		€	388	401	426	498	564	613	700	1 000

1) According to Eurovent standard. Air: 27 °C DB / 19 °C WB. Water in / out: 7 °C / 12 °C. 2) Air: 20 °C. Water in / out: 50 °C / 45 °C. 3) The sound pressure levels are based on (NR) characteristics of a room having volume of 100 m³ with reverberation of 0,5 seconds. Values indicated are for 0 Pa external static pressure, for additional pressure characteristics, please refer the selection software.

Technical focus

- Cooling capacity from 0,7 to 8,1 kW
- Heating capacity from 0,7 to 10,3 kW
- 5-speed AC fan motor(s)

Operating limits

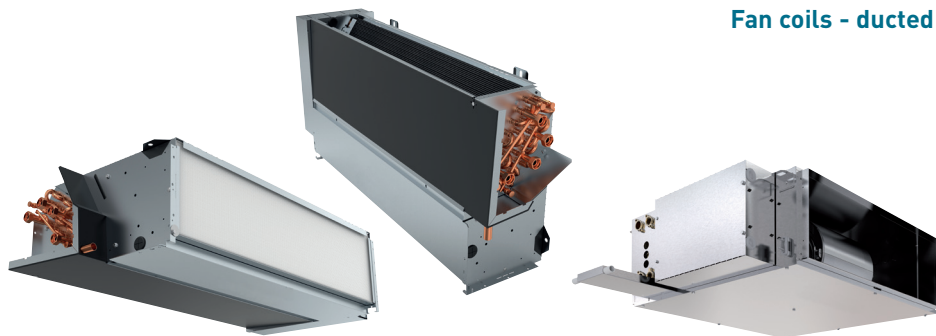
Entering water temperature	From 5 to 90 °C
Indoor air temperature	From 5 to 32 °C

Main features and accessories

- 2 and 4-pipe configurations
- Left or right hand arrangements
- Ease of installation
- Very low acoustic levels
- 2 way or 3 way ON / OFF valves
- Auxiliary drain pan
- Air intake with removable grid
- G2 filter



Fan coils - ducted (EC)



Optional controller. Wired remote controller with touch control. PAW-FC-907EC



Optional controller. Wired remote controller. PAW-FC-903EC

2-pipe - Left connection (PAW-)			FC2E-D010L	FC2E-D020L	FC2E-D030L	FC2E-D040L	FC2E-D050L	FC2E-D060L	FC2E-D070L	FC2E-D080L	FC2E-F040L
2-pipe - Right connection (PAW-)			FC2E-D010R	FC2E-D020R	FC2E-D030R	FC2E-D040R	FC2E-D050R	FC2E-D060R	FC2E-D070R	FC2E-D080R	FC2E-F040R
Total cooling capacity ¹⁾	Lo/Med/Hi	kW	0,6/1,2/2,1	0,6/1,4/2,4	0,9/2,1/3,1	1,3/2,9/4,2	1,3/4,0/5,0	2,0/4,5/5,2	2,7/5,9/6,9	5,1/6,5/8,8	3,6/6,6/9,2
Sensible cooling capacity ¹⁾	Lo/Med/Hi	kW	0,5/1,1/1,9	0,5/1,1/1,9	0,6/1,6/2,4	1,0/2,1/3,0	1,1/3,0/3,7	1,4/3,5/4,0	2,0/4,3/5,2	3,7/4,8/6,6	2,9/6,1/9,1
Water flow	Lo/Med/Hi	l/h	107/210/356	110/237/406	148/354/532	230/506/722	231/685/743	341/767/800	463/1008/1098	879/1111/1254	627/1142/1575
Water pressure drop	Lo/Med/Hi	kPa	8,2/28,2/76,9	1,5/4,6/11,0	5,0/20,5/42,1	6,4/24,4/46,3	4,9/35,1/41,0	7,8/35,8/38,8	3,0/14,0/16,6	14,1/21,4/26,6	10,6/51,2/93,8
Heating capacity ²⁾	Lo/Med/Hi	kW	0,8/1,6/2,9	0,9/1,9/3,3	1,0/2,2/3,4	1,4/3,0/5,3	1,7/5,2/5,5	2,3/5,9/6,1	3,8/7,3/8,2	6,2/8,0/9,3	4,4/8,3/11,8
4-pipe - Left connection (PAW-)			FC4E-D010L	FC4E-D020L	FC4E-D030L	FC4E-D040L	FC4E-D050L	FC4E-D060L	FC4E-D070L	FC4E-D080L	FC4E-F040L
4-pipe - Right connection (PAW-)			FC4E-D010R	FC4E-D020R	FC4E-D030R	FC4E-D040R	FC4E-D050R	FC4E-D060R	FC4E-D070R	FC4E-D080R	FC4E-F040R
Total cooling capacity ¹⁾	Lo/Med/Hi	kW	0,5/1,1/1,9	0,6/1,2/2,2	0,8/1,9/2,9	1,2/2,7/4,0	1,2/3,6/4,6	1,8/4,1/4,9	2,6/5,1/6,4	5,0/6,2/9,6	3,3/6,4/8,8
Sensible cooling capacity ¹⁾	Lo/Med/Hi	kW	0,4/0,9/1,7	0,4/1,0/1,8	0,6/1,5/2,2	0,9/1,9/2,8	1,0/2,8/3,5	1,2/3,2/3,8	1,9/3,8/4,8	3,6/4,6/7,2	2,7/5,6/8,0
Water flow	Lo/Med/Hi	l/h	92/185/327	97/206/375	129/321/493	205/457/681	212/625/686	306/707/749	443/886/977	855/1070/1242	567/1093/1511
Water pressure drop	Lo/Med/Hi	kPa	5,8/20,1/59,2	1,3/3,7/9,7	4,0/9,2/19,7	6,3/29,6/60,1	2,5/17,9/21,3	5,1/24,3/27,2	3,5/13,6/16,5	22,9/33,9/44,3	10,0/47,2/86,7
Heating capacity ²⁾	Lo/Med/Hi	kW	0,4/0,8/1,4	0,6/0,9/1,5	1,0/1,4/1,8	1,2/2,0/2,8	1,6/2,4/2,5	1,4/2,9/3,1	2,5/3,4/3,6	4,5/5,9/6,9	2,5/4,5/6,2
Water flow	Lo/Med/Hi	l/h	76/140/235	95/161/255	166/243/304	204/350/483	267/416/438	233/503/531	434/583/614	767/1011/1194	432/783/1065
Water pressure drop	Lo/Med/Hi	kPa	1,8/4,0/8,4	1,4/3,8/9,4	5,3/9,7/14,1	15,6/41,8/76,3	11,9/26,3/28,9	11,5/43,6/48,1	61,5/103,8/113,9	42,1/69,7/95,1	30,6/107,6/214,8
Sound levels											
Global sound power	Lo/Med/Hi	dB(A)	34/47/60	34/47/60	31/50/59	29/44/52	30/51/57	32/54/58	40/54/59	51/56/64	42/58/68 ³⁾
Global sound pressure ⁴⁾	Lo/Med/Hi	dB(A)	25/38/51	25/38/51	22/41/50	20/35/43	21/42/48	23/45/49	31/45/50	42/47/55	23/39/52
Fan											
Number			1	1	1	2	2	2	2	3	1
Air flow 2-pipe	Lo/Med/Hi	m ³ /h	108/228/417	98/234/413	145/380/585	170/412/678	203/645/816	245/737/912	350/850/1050	685/927/1398	592/1284/1935
Air flow 4-pipe	Lo/Med/Hi	m ³ /h	91/199/379	84/200/380	123/342/540	148/369/627	185/587/646	205/668/716	329/798/894	660/884/1079	523/1222/1864
Maximum external pressure		Pa	75	75	75	105	70	105	115	70	190
Filter			G2	G2	G2	G2	G2	G2	G2	G2	G2
Electrical data											
Power supply	Voltage	V	230	230	230	230	230	230	230	230	230
	Phase		Single phase	Single phase	Single phase	Single phase	Single phase	Single phase	Single phase	Single phase	Single phase
	Frequency	Hz	50/60	50/60	50/60	50/60	50/60	50/60	50/60	50/60	50/60
Power consumption 2-pipe	Lo/Med/Hi	W	5/11/41	5/13/41	4/16/42	2/13/43	4/24/46	2/30/54	11/44/77	23/42/108	11/62/197
Power consumption 4-pipe	Lo/Med/Hi	W	5/11/39	5/13/40	6/15/40	2/12/42	2/23/44	2/28/52	11/43/75	22/41/116	11/60/188
Water connections											
Type			Female gas threaded	Female gas threaded	Female gas threaded	Female gas threaded	Female gas threaded	Female gas threaded	Female gas threaded	Female gas threaded	Female gas threaded
2-pipe		Inch	1/2	1/2	1/2	1/2	1/2	1/2	3/4	3/4	3/4
	Cooling	Inch	1/2	1/2	1/2	1/2	1/2	1/2	3/4	3/4	3/4
4-pipe	Heating	Inch	1/2	1/2	1/2	1/2	1/2	1/2	1/2	1/2	1/2
Dimension and weight											
Dimension	HxWxD	mm	220 x 570 x 430	220 x 570 x 430	220 x 730 x 430	220 x 938 x 430	220 x 1122 x 430	220 x 1307 x 430	220 x 1121 x 530	220 x 1316 x 530	223 x 1233 x 653
Weight	2 / 4-pipes	kg	13/14	13/14	15/16	20/22	22/24	26/28	27/29	38/40	19/19
2-pipe RRP		€	564	613	638	675	739	813	901	1 191	1 376
4-pipe RRP		€	599	638	669	725	788	860	953	1 264	1 472

1) According to Eurovent standard. Air: 27 °C DB / 19 °C WB. Water in / out: 7 °C / 12 °C. 2) Air: 20 °C. Water in / out: 50 °C / 45 °C. 3) The sound power levels indicated are from return and radiated measurements. 4) The sound pressure levels are based on [NR] characteristics of a room having volume of 100 m³ with reverberation of 0,5 seconds. Values indicated are for 0 Pa external static pressure, for additional pressure characteristics, please refer the selection software.

Technical focus

- Cooling capacity from 0,5 to 9,6 kW
- Heating capacity from 0,6 to 13,6 kW
- Low energy consumption EC fan(s)

Operating limits

Entering water temperature	From 5 to 90 °C
Indoor air temperature	From 5 to 32 °C

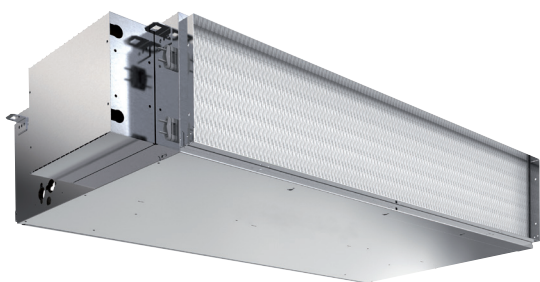
Main features and accessories

- 2 and 4-pipe configurations
- Left or right hand arrangements
- Can be installed both horizontally and vertically*
- Ease of installation
- Very low acoustic levels
- 2 way or 3 way ON / OFF valves
- Auxiliary drain pan
- Air intake with removable grid
- G2 filter

* PAW-FC2E-F040 and PAW-FC4E-F040 may only be installed horizontally.



Fan coils - high static pressure ducted (AC)



Optional controller.
Advanced wired
remote controller.
PAW-FC-RC1



Optional controller.
Wired remote
controller with
touch control.
PAW-FC-907AC



Optional controller.
Wired remote
controller.
PAW-FC-903AC

2-pipe - Left connection			PAW-FC2A-E070L	PAW-FC2A-E150L	PAW-FC2A-E180L	PAW-FC2A-E210L	PAW-FC2A-E240L*	PAW-FC2A-E270L*
2-pipe - Right connection			PAW-FC2A-E070R	PAW-FC2A-E150R	PAW-FC2A-E180R	PAW-FC2A-E210R	PAW-FC2A-E240R*	PAW-FC2A-E270R*
Total cooling capacity ¹⁾	Lo/Med/Hi	kW	4,4/5,5/6,4	5,6/11,5/14,2	4,9/11,5/15,0	5,2/13,7/18,6	14,3/19,8/23,3	15,8/23,0/27,5
Sensible cooling capacity ¹⁾	Lo/Med/Hi	kW	3,12/5,1	3,9/9,2/12,2	3,7/9,5/13,1	3,5/9,9/13,7	10,3/14,9/17,8	11,0/16,3/19,7
Water flow	Lo/Med/Hi	l/h	749/951/1095	966/1979/2437	837/1979/2589	899/2357/3201	2468/3410/4015	2718/3951/4740
Water pressure drop	Lo/Med/Hi	kPa	26,5/42,5/56,2	5,5/19,9/29,3	4,4/19,6/32,0	4,9/28,8/51,5	13,8/25,2/34,2	12,8/25,2/35,3
Heating capacity ²⁾	Lo/Med/Hi	kW	5,4/8,6/12,7	6,2/14,2/20,0	6,3/16,3/23,2	6,1/16,5/23,4	17,2/26,3/32,6	17,9/27,5/33,7
4-pipe - Left connection			PAW-FC4A-E070L	PAW-FC4A-E150L	PAW-FC4A-E180L	PAW-FC4A-E210L	PAW-FC4A-E240L*	PAW-FC4A-E270L*
4-pipe - Right connection			PAW-FC4A-E070R	PAW-FC4A-E150R	PAW-FC4A-E180R	PAW-FC4A-E210R	PAW-FC4A-E240R*	PAW-FC4A-E270R*
Total cooling capacity ¹⁾	Lo/Med/Hi	kW	4,0/5,4/6,0	5,3/10,1/11,9	5,5/11,2/13,6	5,9/14,4/18,8	13,3/17,7/20,5	14,3/19,9/23,4
Sensible cooling capacity ¹⁾	Lo/Med/Hi	kW	2,8/4,1/4,7	3,7/8,4/10,9	3,9/9,1/12,0	4,0/10,6/14,5	9,9/13,9/16,3	10,3/14,9/17,8
Water flow	Lo/Med/Hi	l/h	680/924/1035	919/1739/2044	951/1928/2335	1013/2478/3241	2291/3053/3526	2464/3427/4032
Water pressure drop	Lo/Med/Hi	kPa	29,7/52,1/64,4	4,1/13,5/18,4	4,7/17,4/25,0	6,6/35,2/59,1	14,5/25,0/33,0	12,8/23,3/31,5
Heating capacity ²⁾	Lo/Med/Hi	kW	3,7/6,0/7,4	5,3/11,8/15,9	5,3/11,9/15,9	5,3/11,9/16,0	7,2/11,1/13,5	7,2/11,1/13,5
Water flow	Lo/Med/Hi	l/h	636/1029/1266	906/2038/2746	911/2045/2745	916/2051/2747	1242/1910/2329	1242/1910/2329
Water pressure drop	Lo/Med/Hi	kPa	14,2/30,7/43,6	39,0/167,6/293,0	23,9/100,8/174,3	24,2/101,4/174,6	45,8/87,8/120,3	28,3/53,3/72,5
Sound levels								
Sound power return + radiated	Lo/Med/Hi	dB(A)	54/60/63	52/66/72	54/66/74	52/66/72	65/73/75	65/73/75
Sound power discharge	Lo/Med/Hi	dB(A)	53/59/62	52/64/71	52/64/71	52/64/71	64/72/75	64/72/75
Sound pressure ³⁾	Lo/Med/Hi	dB(A)	33/39/42	31/45/51	31/45/51	31/45/51	44/52/54	44/52/54
Fan								
Number			1	1	1	1	1	1
Air flow 2-pipe	Lo/Med/Hi	m ³ /h	680/1091/1562	676/2110/3197	676/2110/3197	676/2110/3197	1927/3130/3923	1927/3130/3923
Air flow 4-pipe	Lo/Med/Hi	m ³ /h	552/1132/1496	676/2110/3197	676/2110/3197	676/2110/3197	1927/3130/3923	1927/3130/3923
Maximum external pressure		Pa	110	200	200	200	220	220
Filter			G3	G3	G3	G3	G3	G3
Electrical data								
Power supply	Voltage	V	230	230	230	230	230	230
	Phase		Single phase	Single phase	Single phase	Single phase	Single phase	Single phase
	Frequency	Hz	50/60	50/60	50/60	50/60	50/60	50/60
Power consumption	Lo/Med/Hi	W	132/182/222	180/421/675	180/421/675	180/421/675	420/530/673	420/530/673
Water connections								
Type			Female gas threaded	Gas Male threaded	Gas Male threaded	Gas Male threaded	Gas Male threaded	Gas Male threaded
2-pipe		Inch	1/2	1	1 1/4	1 1/4	1 1/4	1 1/4
	Cooling	Inch	1/2	1	1	1	1 1/4	1 1/4
4-pipe		Inch	1/2	3/4	3/4	3/4	3/4	3/4
	Heating	Inch	1/2	3/4	3/4	3/4	3/4	3/4
Dimension and weight								
Dimension	H x W x D	mm	250 x 698 x 1200	375 x 798 x 1380	375 x 798 x 1380	375 x 798 x 1380	450 x 798 x 1500	450 x 798 x 1500
Weight		kg	42	63	65	67	76	80
2-pipe RRP		€	1 083	1 349	1 437	1 514	1 650	1 813
4-pipe RRP		€	1 155	1 448	1 539	1 614	1 764	1 938

1) According to Eurotest standard. Air: 27 °C DB / 19 °C WB. Water in / out: 7 °C / 12 °C. 2) Air: 20 °C. Water in / out: 50 °C / 45 °C. 3) Informative data: Considering an hypothetical sound attenuation of the room and installation of 21 dB.

Values indicated are for 50 Pa external static pressure, for additional pressure characteristics, please refer the selection software.

* High fan speed used for capacity, water flow, sound and air flow values.

Technical focus

- 6 sizes
- Cooling capacity from 4,1 to 21,9 kW
- Heating capacity from 4,7 to 21,5 kW
- 5-speed AC fan motor

Main features and accessories

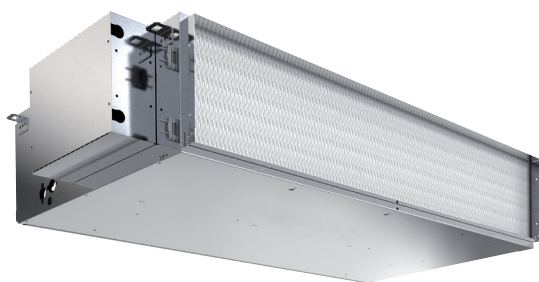
- 2 and 4-pipe, left and right hand configurations
- Static pressure up to 220Pa
- Double skin insulation
- 2 way or 3 way ON / OFF valves
- Auxiliary drain pan
- Air intake with removable grid
- G3 filter

Operating limits

Entering water temperature	From 5 to 90 °C
Indoor air temperature	From 5 to 32 °C



Fan coils - high static pressure ducted (EC)



Optional controller.
Wired remote
controller with
touch control.
PAW-FC-907EC



Optional controller.
Wired remote
controller.
PAW-FC-903EC

2-pipe - Left connection			PAW-FC2E-E150L	PAW-FC2E-E180L	PAW-FC2E-E210L	PAW-FC2E-E240L	PAW-FC2E-E270L
2-pipe - Right connection			PAW-FC2E-E150R	PAW-FC2E-E180R	PAW-FC2E-E210R	PAW-FC2E-E240R	PAW-FC2E-E270R
Total cooling capacity ¹⁾	Lo/Med/Hi	kW	7,0/11,3/14,5	7,8/13,1/17,3	8,6/14,2/19,0	9,3/16,1/20,3	10,2/18,1/23,1
Sensible cooling capacity ¹⁾	Lo/Med/Hi	kW	5,2/9,1/12,1	5,7/10,3/14,1	6,1/10,9/15,0	6,7/12,4/16,2	7,2/13,6/17,8
Water flow	Lo/Med/Hi	l/h	1207/1945/2498	1351/2259/2979	1476/2451/3275	1592/2766/3498	1751/3120/3972
Water pressure drop	Lo/Med/Hi	kPa	11,5/19,3/30,7	6,1/24,9/41,5	6,0/31,0/53,8	6,3/17,1/26,4	5,9/16,4/25,4
Heating capacity ²⁾	Lo/Med/Hi	kW	88/15,8/20,7	9,5/17,9/24,3	10,0/19,4/26,8	11,1/20,8/27,5	11,7/22,8/30,4
4-pipe - Left connection			PAW-FC4E-E150L	PAW-FC4E-E180L	PAW-FC4E-E210L	PAW-FC4E-E240L	PAW-FC4E-E270L
4-pipe - Right connection			PAW-FC4E-E150R	PAW-FC4E-E180R	PAW-FC4E-E210R	PAW-FC4E-E240R	PAW-FC4E-E270R
Total cooling capacity ¹⁾	Lo/Med/Hi	kW	5,9/9,1/11,6	6,6/10,2/13,0	7,9/12,6/16,4	8,4/14,0/17,5	8,9/15,3/19,5
Sensible cooling capacity ¹⁾	Lo/Med/Hi	kW	4,5/7,6/10,1	4,9/8,4/11,2	5,8/9,9/13,4	6,2/11,0/14,2	6,5/11,8/15,5
Water flow	Lo/Med/Hi	l/h	1011/1567/2005	1141/1764/2243	1361/2175/2826	1447/2409/3020	1529/2641/3359
Water pressure drop	Lo/Med/Hi	kPa	4,9/11,1/17,7	6,5/14,7/23,2	7,6/27,5/45,4	6,2/15,9/24,5	5,5/14,5/22,4
Heating capacity ²⁾	Lo/Med/Hi	kW	3,6/5,8/7,3	6,1/10,0/12,8	6,1/10,1/12,9	4,8/8,3/10,3	4,7/8,2/10,5
Water flow	Lo/Med/Hi	l/h	621/991/1264	1052/1729/2211	1057/1734/2227	832/1421/1780	804/1407/1804
Water pressure drop	Lo/Med/Hi	kPa	20,7/45,6/70,1	30,7/74,1/116,4	30,8/74,5/118,0	19,6/55,9/78,7	7,2/33,9/48,9
Sound levels							
Sound power return + radiated	Lo/Med/Hi	dB(A)	56/67/74	56/67/74	56/67/74	58/69/76	58/69/76
Sound power discharge	Lo/Med/Hi	dB(A)	56/65/74	56/65/74	56/65/74	58/67/76	58/67/76
Sound pressure ³⁾	Lo/Med/Hi	dB(A)	35/46/52	35/46/52	35/46/52	37/48/54	37/48/54
Fan							
Number			1	1	1	1	1
Air flow 2-pipe	Lo/Med/Hi	m ³ /h	1071/2418/3583	1071/2418/3583	1071/2418/3583	1227/2700/3829	1227/2700/3829
Air flow 4-pipe	Lo/Med/Hi	m ³ /h	1071/2418/3583	1071/2418/3583	1071/2418/3583	1227/2700/3829	1227/2700/3829
Maximum external pressure		Pa	300	300	300	300	300
Filter			G3	G3	G3	G3	G3
Electrical data							
Power supply	Voltage	V	230	230	230	230	230
	Phase		Single phase	Single phase	Single phase	Single phase	Single phase
	Frequency	Hz	50/60	50/60	50/60	50/60	50/60
Power consumption	Lo/Med/Hi	W	67/172/246	67/172/246	67/172/246	64/237/364	64/237/364
Water connections							
Type			Gas Male threaded	Gas Male threaded	Gas Male threaded	Gas Male threaded	Gas Male threaded
2-pipe		Inch	1	1 1/4	1 1/4	1 1/4	1 1/4
	Heating	Inch	3/4	3/4	3/4	3/4	3/4
4-pipe	Cooling	Inch	1	1	1	1 1/4	1 1/4
	Heating	Inch	3/4	3/4	3/4	3/4	3/4
Dimension and weight							
Dimension	HxWxD	mm	375 x 798 x 1380	375 x 798 x 1380	375 x 798 x 1380	450 x 798 x 1500	450 x 798 x 1500
Weight		kg	63	65	67	76	80
2-pipe RRP		€	1 845	1 955	2 079	2 267	2 417
4-pipe RRP		€	1 969	2 094	2 219	2 400	2 583

1) According to Eurovent standard. Air: 27 °C DB / 19 °C WB. Water in / out: 7 °C / 12 °C. 2) Air: 20 °C. Water in / out: 50 °C / 45 °C. 3) Informative data: Considering an hypothetical sound attenuation of the room and installation of 21 dB.

Values indicated are for 50 Pa external static pressure, for additional pressure characteristics, please refer the selection software.

Technical focus

- 5 sizes
- Cooling capacity from 6,6 to 19,9 kW
- Heating capacity from 5,9 to 21,4 kW
- Low energy consumption EC fan

Main features and accessories

- 2 and 4-pipe, left and right hand configurations
- Static pressure up to 300Pa
- Double skin insulation
- 2 way or 3 way ON / OFF valves
- Auxiliary drain pan
- Air intake with removable grid
- G3 filter

Operating limits

Entering water temperature	From 5 to 90 °C
Indoor air temperature	From 5 to 32 °C



Fan coils - 4 way cassette (AC)



Optional controller. Advanced wired remote controller. PAW-FC-RC1



Optional controller. Wired remote controller with touch control. PAW-FC-907AC



Optional controller. Wired remote controller. PAW-FC-903AC

2-pipe			PAW-FC2A-U020-2	PAW-FC2A-U030-2	PAW-FC2A-U040-2	PAW-FC2A-U050-2	PAW-FC2A-U060-2	PAW-FC2A-U070-2
Total cooling capacity ¹⁾	Lo/Med/Hi	kW	1,5/1,8/2,4	1,9/2,7/4,0	2,8/3,5/4,7	3,4/4,4/6,1	3,7/5,4/7,2	4,0/6,5/8,6
Sensible cooling capacity ¹⁾	Lo/Med/Hi	kW	1,3/1,5/2,0	1,4/2,2/3,0	2,1/2,6/3,6	2,6/3,4/4,8	2,7/4,0/5,4	3,0/4,8/6,4
Water flow	Lo/Med/Hi	l/h	265/303/404	323/493/683	478/597/801	576/762/142	636/937/1233	695/1111/1476
Water pressure drop	Lo/Med/Hi	kPa	4,3/6,8/10,9	3,6/8,5/14,4	6,9/11,2/18,3	8,4/13,0/21,9	3,4/7,5/11,5	5,6/13,0/20,5
Heating capacity ²⁾	Lo/Med/Hi	kW	2,2/2,5/3,2	2,3/3,7/4,5	3,7/4,6/6,2	4,5/6,0/8,1	4,5/7,4/10,0	5,2/9,2/12,0
4-pipe			PAW-FC4A-U020-2	PAW-FC4A-U030-2	PAW-FC4A-U040-2	—	PAW-FC4A-U060-2	PAW-FC4A-U070-2
Total cooling capacity ¹⁾	Lo/Med/Hi	kW	1,4/1,5/2,0	2,0/2,7/3,4	2,5/3,3/4,0	—	3,0/4,9/6,6	3,2/6,0/7,5
Sensible cooling capacity ¹⁾	Lo/Med/Hi	kW	1,2/1,4/1,8	1,5/2,1/2,6	2,0/2,6/3,2	—	2,3/3,8/5,1	2,5/4,6/5,9
Water flow	Lo/Med/Hi	l/h	232/258/359	342/465/576	437/563/683	—	511/851/1137	543/1030/1294
Water pressure drop	Lo/Med/Hi	kPa	6,6/8,9/13,6	4,4/8,3/11,6	6,7/11,2/15,3	—	6,0/13,9/22,2	7,1/18,9/27,5
Heating capacity ²⁾	Lo/Med/Hi	kW	0,8/0,9/1,2	2,2/3,1/3,8	3,0/3,5/4,1	—	3,7/5,5/7,0	4,5/7,1/8,9
Water flow	Lo/Med/Hi	l/h	132/153/201	374/530/658	521/603/699	—	636/939/1210	776/1214/1540
Water pressure drop	Lo/Med/Hi	kPa	25,7/33,4/53,6	13,7/24,2/35	24,2/30,9/39,8	—	7,6/13,8/20,7	10,2/20,8/30,9
Sound levels								
Global sound power 2-pipe	Lo/Med/Hi	dB(A)	36/40/49	35/47/53	42/48/57	35/40/49	38/46/54	40/52/59
Global sound power 4-pipe	Lo/Med/Hi	dB(A)	36/40/49	35/47/53	42/48/57	—	38/46/54	40/52/59
Global sound pressure 2-pipe ³⁾	Lo/Med/Hi	dB(A)	27/31/40	26/35/44	33/39/48	26/31/40	29/37/45	31/43/50
Global sound pressure 4-pipe ³⁾	Lo/Med/Hi	dB(A)	27/31/40	26/35/44	33/39/48	—	29/37/45	31/43/50
Fan								
Number			1	1	1	1	1	1
Air flow	Lo/Med/Hi	m ³ /h	360/450/659	320/504/734	486/626/900	529/720/979	500/824/1159	601/1080/1447
Filter			G1	G1	G1	G1	G1	G1
Electrical data								
Power supply	Voltage	V	230	230	230	230	230	230
	Phase		Single phase	Single phase	Single phase	Single phase	Single phase	Single phase
	Frequency	Hz	50	50	50	50	50	50
Power consumption 2-pipe	Lo/Med/Hi	W	25/35/58	17/34/58	38/58/99	28/41/66	34/61/88	44/92/125
Power consumption 4-pipe	Lo/Med/Hi	W	25/35/58	17/34/58	38/58/99	—	34/61/88	44/92/125
Water connections								
Type			Female gas threaded	Female gas threaded	Female gas threaded	Female gas threaded	Female gas threaded	Female gas threaded
2-pipe		Inch	3/4	3/4	3/4	1	1	1
4-pipe	Cooling	Inch	3/4	3/4	3/4	—	1	1
	Heating	Inch	1/2	1/2	1/2	—	3/4	3/4
Dimension and weight								
Dimension including panel	HxWxD	mm	334x720x720	334x720x720	334x720x720	339x960x960	339x960x960	339x960x960
Weight		kg	14,8	16,5	16,5	37,1	37,1	39,6
2-pipe RRP		€	984	1 045	1 106	1 557	1 583	1 707
4-pipe RRP		€	1 069	1 141	1 191	-	1 830	1 952
Panel reference			PAW-FC-KPY2040	PAW-FC-KPY2040	PAW-FC-KPY2040	PAW-FC-KPU5070	PAW-FC-KPU5070	PAW-FC-KPU5070
Panel RRP		€	232	232	232	293	293	293

1) According to Eurovent standard. Air: 27 °C DB / 19 °C WB. Water in / out: 7 °C / 12 °C. 2) According to Eurovent standard. Air: 20 °C. Water in / out: 45 °C / 40 °C. 3) Information data considering an hypothetical sound attenuation of the room and installation of -9 dB(A).

Technical focus

- 6 sizes*
- Cooling capacity from 1,4 to 8,6 kW
- Heating capacity from 1,1 to 12,8 kW
- 3-speed AC fan motor

Main features and accessories

- 2 and 4-pipe configurations
- Very low acoustic levels
- Quick access, by simply removing the front grille
- All connections: located at the same side
- Galvanized steel sheet with thermal and acoustical insulation, avoiding condensation on the casing and providing good sound attenuation
- Cleanable synthetic-type air filter

Operating limits	
Entering water temperature	From 5 to 90 °C
Indoor air temperature	From 5 to 32 °C

* 5 sizes available for 4-pipe configuration.



Fan coils - 4 way cassette (EC)



Optional controller.
Wired remote
controller with
touch control.
PAW-FC-907EC



Optional controller.
Wired remote
controller.
PAW-FC-903EC

2-pipe			PAW-FC2E-U020-2	PAW-FC2E-U030-2	PAW-FC2E-U040-2	PAW-FC2E-U050-2	PAW-FC2E-U060-2	PAW-FC2E-U070-2
Total cooling capacity ¹⁾	Lo/Med/Hi	kW	1,6/1,8/2,4	1,9/2,9/4,0	2,8/3,5/4,7	3,4/4,4/6,1	3,7/5,5/7,2	4,1/6,5/9,6
Sensible cooling capacity ¹⁾	Lo/Med/Hi	kW	1,3/1,5/2,0	1,4/2,2/3,1	2,1/2,7/3,6	2,6/3,5/4,7	2,7/4,1/5,4	3,0/4,9/7,2
Water flow	Lo/Med/Hi	l/h	267/306/409	325/497/688	481/604/808	579/765/1050	640/944/1243	700/1119/1649
Water pressure drop	Lo/Med/Hi	kPa	4,2/6,9/11,2	3,5/8,6/14,6	6,8/11,4/18,6	8,4/13,1/22,2	3,4/7,6/11,7	5,8/13,1/24,6
Heating capacity ²⁾	Lo/Med/Hi	kW	2,2/2,5/3,2	2,3/3,7/4,5	3,7/4,6/6,2	4,5/6,0/8,1	4,5/7,4/10,0	5,2/9,2/13,0
4-pipe			PAW-FC4E-U020-2	PAW-FC4E-U030-2	PAW-FC4E-U040-2	—	PAW-FC4E-U060-2	PAW-FC4E-U070-2
Total cooling capacity ¹⁾	Lo/Med/Hi	kW	1,4/1,5/2,0	2,0/2,7/3,4	2,6/3,2/4,0	—	3,0/5,0/6,6	3,2/6,1/7,9
Sensible cooling capacity ¹⁾	Lo/Med/Hi	kW	1,2/1,4/1,9	1,5/2,1/2,6	2,1/2,6/3,3	—	2,3/3,8/5,1	2,6/4,7/6,3
Water flow	Lo/Med/Hi	l/h	234/262/344	344/464/581	442/556/690	—	516/858/1144	549/1041/1366
Water pressure drop	Lo/Med/Hi	kPa	6,6/9,1/14,0	4,4/8,2/11,7	6,7/10,9/15,5	—	6,0/14,1/22,4	7,2/19,2/30,1
Heating capacity ²⁾	Lo/Med/Hi	kW	0,8/0,9/1,2	2,2/3,1/3,8	3,0/3,5/4,1	—	3,7/5,5/7,0	4,5/7,1/9,8
Water flow	Lo/Med/Hi	l/h	132/153/201	374/530/658	521/603/699	—	636/939/1210	776/1214/1686
Water pressure drop	Lo/Med/Hi	kPa	25,7/33,4/53,6	13,7/24,2/35	24,2/30,9/39,8	—	7,6/13,8/20,7	10,2/20,8/36
Sound levels								
Global sound power 2-pipe	Lo/Med/Hi	dB(A)	36/40/49	35/47/53	42/48/57	35/40/49	38/46/54	40/52/59
Global sound power 4-pipe	Lo/Med/Hi	dB(A)	36/40/49	35/44/53	42/48/57	—	38/46/54	40/52/59
Global sound pressure 2-pipe ³⁾	Lo/Med/Hi	dB(A)	27/31/40	26/35/44	33/39/48	26/31/40	29/37/45	31/43/50
Global sound pressure 4-pipe ³⁾	Lo/Med/Hi	dB(A)	27/31/40	26/35/44	33/39/48	—	29/37/45	31/43/50
Fan								
Number			1	1	1	1	1	1
Air flow	Lo/Med/Hi	m ³ /h	360/450/659	320/504/734	486/626/900	529/720/979	500/824/1159	601/1080/1598
Filter			G1	G1	G1	G1	G1	G1
Electrical data								
Power supply	Voltage	V	230	230	230	230	230	230
	Phase		Single phase	Single phase	Single phase	Single phase	Single phase	Single phase
	Frequency	Hz	50	50	50	50	50	50
Power consumption 2-pipe	Lo/Med/Hi	W	9/13/29	7/14/32	13/22/57	7/12/25	9/23/25	11/40/115
Power consumption 4-pipe	Lo/Med/Hi	W	9/13/29	7/14/32	13/22/57	—	9/23/46	11/40/115
Water connections								
Type			Female gas threaded	Female gas threaded	Female gas threaded	Female gas threaded	Female gas threaded	Female gas threaded
2-pipe	Inch		3/4	3/4	3/4	1	1	1
4-pipe	Cooling	Inch	3/4	3/4	3/4	—	1	1
	Heating	Inch	1/2	1/2	1/2	—	3/4	3/4
Dimension and weight								
Dimension including panel	HxWxD	mm	334x720x720	334x720x720	334x720x720	339x960x960	339x960x960	339x960x960
Weight		kg	14,8	16,5	16,5	37,1	37,1	39,6
2-pipe RRP		€	1 106	1 178	1 240	1 707	1 875	1 907
4-pipe RRP		€	1 226	1 288	1 348	-	2 083	2 146
Panel reference			PAW-FC-KPY2040	PAW-FC-KPY2040	PAW-FC-KPY2040	PAW-FC-KPU5070	PAW-FC-KPU5070	PAW-FC-KPU5070
Panel RRP		€	232	232	232	293	293	293

1) According to Eurovent standard. Air: 27 °C DB / 19 °C WB. Water in / out: 7 °C / 12 °C. 2) According to Eurovent standard. Air: 20 °C. Water in / out: 45 °C / 40 °C. 3) Information data considering an hypothetical sound attenuation of the room and installation of -9 dB(A).

Technical focus

- 6 sizes*
- Cooling capacity from 1,4 to 9,4 kW
- Heating capacity from 1,1 to 14,0 kW
- Low energy consumption EC fan

Main features and accessories

- 2 and 4-pipe configurations
- Very low acoustic levels
- Quick access, by simply removing the front grille
- All connections: located at the same side
- Galvanized steel sheet with thermal and acoustical insulation, avoiding condensation on the casing and providing good sound attenuation
- Cleanable synthetic-type air filter

Operating limits

Entering water temperature	From 5 to 90 °C
Indoor air temperature	From 5 to 32 °C

* 5 sizes available for 4-pipe configuration.



Fan coils - ceiling chassis (AC)



Optional controller. Advanced wired remote controller. PAW-FC-RC1



Optional controller. Wired remote controller with touch control. PAW-FC-907AC



Optional controller. Wired remote controller. PAW-FC-903AC

2-pipe - Left connection (PAW-)			FC2A-T010L	FC2A-T020L	FC2A-T030L	FC2A-T040L	FC2A-T050L	FC2A-T060L	FC2A-T070L	FC2A-T080L
2-pipe - Right connection (PAW-)			FC2A-T010R	FC2A-T020R	FC2A-T030R	FC2A-T040R	FC2A-T050R	FC2A-T060R	FC2A-T070R	FC2A-T080R
Total cooling capacity ¹⁾	Lo/Med/Hi	kW	0,7/1,0/1,5	0,7/1,2/1,7	1,0/2,0/2,5	1,2/2,4/3,2	1,7/3,2/4,6	2,7/4,6/5,8	3,4/6,1/7,3	4,6/6,1/8,1
Sensible cooling capacity ¹⁾	Lo/Med/Hi	kW	0,5/0,8/1,1	0,6/0,9/1,3	0,8/1,5/1,9	0,9/1,8/2,3	1,2/2,2/3,3	1,9/3,3/4,5	2,4/4,3/5,1	3,4/4,6/6,3
Water flow	Lo/Med/Hi	l/h	124/172/250	127/213/289	172/341/430	206/413/547	296/544/798	466/784/1003	587/1058/1252	798/1048/1400
Water pressure drop	Lo/Med/Hi	kPa	10,7/19,5/39,2	1,9/3,9/6,3	6,3/19,3/28,8	5,4/17,1/28,0	7,5/22,8/46,9	13,9/37,4/60,2	4,8/15,4/21,5	11,9/19,3/32,5
Heating capacity ²⁾	Lo/Med/Hi	kW	0,9/1,4/2,0	0,9/1,5/2,2	1,3/2,4/3,1	1,4/2,9/4,0	2,1/4,1/5,7	3,1/5,3/7,1	4,3/7,9/9,3	5,9/8,1/11,6
4-pipe - Left connection (PAW-)			FC4A-T010L	FC4A-T020L	FC4A-T030L	FC4A-T040L	FC4A-T050L	FC4A-T060L	FC4A-T070L	FC4A-T080L
4-pipe - Right connection (PAW-)			FC4A-T010R	FC4A-T020R	FC4A-T030R	FC4A-T040R	FC4A-T050R	FC4A-T060R	FC4A-T070R	FC4A-T080R
Total cooling capacity ¹⁾	Lo/Med/Hi	kW	0,7/0,9/1,3	0,6/1,1/1,6	1,0/1,9/2,4	1,1/2,3/3,0	1,7/3,0/4,3	2,6/4,4/5,6	3,3/5,9/6,9	4,5/5,9/8,0
Sensible cooling capacity ¹⁾	Lo/Med/Hi	kW	0,5/0,7/1,0	0,5/0,8/1,2	0,8/1,5/1,8	0,8/1,7/2,2	1,2/2,2/3,1	1,8/3,2/4,3	2,3/4,2/4,9	3,3/4,4/6,2
Water flow	Lo/Med/Hi	l/h	114/159/225	109/192/268	165/327/414	194/388/517	284/522/748	449/756/967	575/1019/1193	775/1020/1380
Water pressure drop	Lo/Med/Hi	kPa	8,3/15,2/29,0	1,5/3,4/5,6	3,0/9,5/14,4	6,4/22,3/36,8	4,2/12,8/25,1	10,2/27,7/44,5	5,9/17,9/24,4	19,3/31,1/53,6
Heating capacity ²⁾	Lo/Med/Hi	kW	0,5/0,7/1,0	0,6/0,9/1,1	1,0/1,4/1,6	0,9/1,6/2,1	1,5/2,3/3,0	1,9/2,9/3,7	2,7/3,6/4,3	3,9/5,6/7,1
Water flow	Lo/Med/Hi	l/h	79/127/178	100/146/190	164/232/274	160/273/354	251/401/508	325/505/633	456/626/736	673/963/1226
Water pressure drop	Lo/Med/Hi	kPa	1,9/3,5/5,6	1,5/3,2/5,3	5,1/9,0/11,9	9,2/26,5/42,7	10,7/24,6/29,5	20,3/43,9/52,9	67,2/117,9/137,8	33,1/63,7/75
Sound levels										
Global sound power	Lo/Med/Hi	dB(A)	33/40/49	31/43/50	30/45/52	30/44/51	34/46/56	38/51/58	43/56/61	50/55/64
Global sound pressure ³⁾	Lo/Med/Hi	dB(A)	24/31/40	22/34/41	21/36/43	21/35/42	25/37/47	29/42/49	34/47/52	41/46/55
Fan										
Number			1	1	1	2	2	2	2	3
Air flow 2-pipe	Lo/Med/Hi	m ³ /h	111/190/283	105/179/265	138/274/390	173/357/499	253/486/716	350/640/933	480/893/1064	660/936/1397
Air flow 4-pipe	Lo/Med/Hi	m ³ /h	95/168/253	89/161/241	132/263/369	162/335/467	242/466/671	334/614/885	470/859/1012	634/905/1370
Filter			G2	G2	G2	G2	G2	G2	G2	G2
Electrical data										
Power supply	Voltage	V	230	230	230	230	230	230	230	230
	Phase		Single phase	Single phase	Single phase	Single phase	Single phase	Single phase	Single phase	Single phase
	Frequency	Hz	50/60	50/60	50/60	50/60	50/60	50/60	50/60	50/60
Power consumption 2-pipe	Lo/Med/Hi	W	13/24/36	10/18/29	16/37/45	15/37/56	28/55/72	37/75/105	53/100/147	90/112/188
Power consumption 4-pipe	Lo/Med/Hi	W	13/24/36	10/18/28	16/37/44	15/37/55	28/54/70	37/74/104	53/99/145	90/112/188
Water connections										
Type			Female gas threaded	Female gas threaded	Female gas threaded	Female gas threaded	Female gas threaded	Female gas threaded	Female gas threaded	Female gas threaded
2-pipe		Inch	1/2	1/2	1/2	1/2	1/2	1/2	3/4	3/4
	Cooling	Inch	1/2	1/2	1/2	1/2	1/2	1/2	3/4	3/4
4-pipe	Heating	Inch	1/2	1/2	1/2	1/2	1/2	1/2	1/2	1/2
Dimension and weight										
Dimension	HxWxD	mm	225 x 766 x 477	225 x 766 x 477	225 x 951 x 477	225 x 1136 x 477	225 x 1321 x 477	225 x 1506 x 477	225 x 1319 x 477	225 x 1506 x 477
Weight	2 / 4-pipes	kg	19/20	19/20	22/23	27/29	30/32	35/37	35/37	47/49
2-pipe RRP		€	600	613	663	739	830	884	996	1 338
4-pipe RRP		€	637	650	700	788	871	936	1 034	1 398

1) According to Eurovent standard. Air: 27 °C DB / 19 °C WB. Water in / out: 7 °C / 12 °C. 2) Air: 20 °C. Water in / out: 50 °C / 45 °C. 3) The sound pressure levels are based on (NR) characteristics of a room having volume of 100 m³ with reverberation of 0,5 seconds.

Technical focus

- Cooling capacity from 0,7 to 8,1 kW
- Heating capacity from 0,7 to 10,3 kW
- 5-speed AC fan motor(s)

Main features and accessories

- 2 and 4-pipe configurations
- Left or right hand arrangements
- Ease of installation
- Very low acoustic levels
- 2 way or 3 way ON / OFF valves
- Auxiliary drain pan
- Air intake with removable grid
- G2 filter

Operating limits	
Entering water temperature	From 5 to 90 °C
Indoor air temperature	From 5 to 32 °C



Fan coils - ceiling chassis (EC)



Optional controller.
Wired remote
controller with
touch control.
PAW-FC-907EC



Optional controller.
Wired remote
controller.
PAW-FC-903EC

2-pipe - Left connection (PAW-)			FC2E-T010L	FC2E-T020L	FC2E-T030L	FC2E-T040L	FC2E-T050L	FC2E-T060L	FC2E-T070L	FC2E-T080L
2-pipe - Right connection (PAW-)			FC2E-T010R	FC2E-T020R	FC2E-T030R	FC2E-T040R	FC2E-T050R	FC2E-T060R	FC2E-T070R	FC2E-T080R
Total cooling capacity ¹⁾	Lo/Med/Hi	kW	0,6/1,2/2,1	0,6/1,4/2,4	0,9/2,1/3,1	1,3/2,9/4,2	1,3/4,0/5,0	2,0/4,5/5,2	2,7/5,9/6,9	5,1/6,5/8,8
Sensible cooling capacity ¹⁾	Lo/Med/Hi	kW	0,5/1,1/1,9	0,5/1,1/1,9	0,6/1,6/2,4	1,0/2,1/3,0	1,1/3,0/3,7	1,4/3,5/4,0	2,0/4,3/5,2	3,7/4,8/6,6
Water flow	Lo/Med/Hi	l/h	107/210/356	110/237/406	148/354/532	230/506/722	231/685/743	341/767/800	463/1008/1098	879/1111/1254
Water pressure drop	Lo/Med/Hi	kPa	8,2/28,2/76,9	1,5/4,6/11,0	5,0/20,5/42,1	6,4/24,4/46,3	4,9/35,1/41,0	7,8/35,8/38,8	3,0/14,0/16,6	14,1/21,4/26,6
Heating capacity ²⁾	Lo/Med/Hi	kW	0,8/1,6/2,9	0,9/1,9/3,3	1,0/2,2/3,4	1,4/3,0/5,3	1,7/5,2/5,5	2,3/5,9/6,1	3,8/7,3/8,2	6,2/8,0/9,3
4-pipe - Left connection (PAW-)			FC4E-T010L	FC4E-T020L	FC4E-T030L	FC4E-T040L	FC4E-T050L	FC4E-T060L	FC4E-T070L	FC4E-T080L
4-pipe - Right connection (PAW-)			FC4E-T010R	FC4E-T020R	FC4E-T030R	FC4E-T040R	FC4E-T050R	FC4E-T060R	FC4E-T070R	FC4E-T080R
Total cooling capacity ¹⁾	Lo/Med/Hi	kW	0,5/1,1/1,9	0,6/1,2/2,2	0,8/1,9/2,9	1,2/2,7/4,0	1,2/3,6/4,6	1,8/4,1/4,9	2,6/5,1/6,4	5,0/6,2/9,6
Sensible cooling capacity ¹⁾	Lo/Med/Hi	kW	0,4/0,9/1,7	0,4/1,0/1,8	0,6/1,5/2,2	0,9/1,9/2,8	1,0/2,8/3,5	1,2/3,2/3,8	1,9/3,8/4,8	3,6/4,6/7,2
Water flow	Lo/Med/Hi	l/h	92/185/327	97/206/375	129/321/493	205/457/681	212/625/686	306/707/749	443/886/977	855/1070/1242
Water pressure drop	Lo/Med/Hi	kPa	5,8/20,1/59,2	1,3/3,7/9,7	4,0/9,2/19,7	6,3/29,6/60,1	2,5/17,9/21,3	5,1/24,3/27,2	3,5/13,6/16,5	22,9/33,9/44,3
Heating capacity ²⁾	Lo/Med/Hi	kW	0,4/0,8/1,4	0,6/0,9/1,5	1,0/1,4/1,8	1,2/2,0/2,8	1,6/2,4/2,5	1,4/2,9/3,1	2,5/3,4/3,6	4,5/5,9/6,9
Water flow	Lo/Med/Hi	l/h	76/140/235	95/161/255	166/243/304	204/350/483	267/416/438	233/503/531	434/583/614	767/1011/1194
Water pressure drop	Lo/Med/Hi	kPa	1,8/4,0/8,4	1,4/3,8/9,4	5,3/9,7/14,1	15,6/41,8/76,3	11,9/26,3/28,9	11,5/43,6/48,1	61,5/103,8/113,9	42,1/69,7/95,1
Sound levels										
Global sound power	Lo/Med/Hi	dB(A)	34/47/60	34/47/60	31/50/59	29/44/52	30/51/57	32/54/58	40/54/59	51/56/64
Global sound pressure ³⁾	Lo/Med/Hi	dB(A)	25/38/51	25/38/51	22/41/50	20/35/43	21/42/48	23/45/49	31/45/50	42/47/55
Fan										
Number			1	1	1	2	2	2	2	3
Air flow 2-pipe	Lo/Med/Hi	m ³ /h	108/228/417	98/234/413	145/380/585	170/412/678	203/645/816	245/737/912	350/850/1050	685/927/1398
Air flow 4-pipe	Lo/Med/Hi	m ³ /h	91/199/379	84/200/380	123/342/540	148/369/627	185/587/646	205/668/716	329/798/894	660/884/1079
Filter			G2	G2	G2	G2	G2	G2	G2	G2
Electrical data										
Power supply	Voltage	V	230	230	230	230	230	230	230	230
	Phase		Single phase	Single phase	Single phase	Single phase	Single phase	Single phase	Single phase	Single phase
	Frequency	Hz	50/60	50/60	50/60	50/60	50/60	50/60	50/60	50/60
Power consumption 2-pipe	Lo/Med/Hi	W	5/11/41	5/13/41	4/16/42	2/13/43	4/24/46	2/30/54	11/44/77	23/42/108
Power consumption 4-pipe	Lo/Med/Hi	W	5/11/39	5/13/40	6/15/40	2/12/42	2/23/44	2/28/52	11/43/75	22/41/116
Water connections										
Type			Female gas threaded	Female gas threaded	Female gas threaded	Female gas threaded	Female gas threaded	Female gas threaded	Female gas threaded	Female gas threaded
2-pipe	Inch		1/2	1/2	1/2	1/2	1/2	1/2	3/4	3/4
4-pipe	Cooling	Inch	1/2	1/2	1/2	1/2	1/2	1/2	3/4	3/4
	Heating	Inch	1/2	1/2	1/2	1/2	1/2	1/2	1/2	1/2
Dimension and weight										
Dimension	HxWxD	mm	225 x 766 x 477	225 x 766 x 477	225 x 951 x 477	225 x 1136 x 477	225 x 1321 x 477	225 x 1506 x 477	225 x 1319 x 477	225 x 1506 x 477
Weight	2 / 4-pipes	kg	19/20	19/20	22/23	27/29	30/32	35/37	35/37	47/49
2-pipe RRP	€		815	838	863	962	1 058	1 142	1 204	1 569
4-pipe RRP	€		863	901	926	1 029	1 131	1 204	1 277	1 595

1) According to Eurovent standard. Air: 27 °C DB / 19 °C WB. Water in / out: 7 °C / 12 °C. 2) Air: 20 °C. Water in / out: 50 °C / 45 °C. 3) The sound pressure levels are based on (NR) characteristics of a room having volume of 100 m³ with reverberation of 0,5 seconds.

Technical focus

- Cooling capacity from 0,5 to 9,6 kW
- Heating capacity from 0,6 to 13,6 kW
- Low energy consumption EC fan(s)

Main features and accessories

- 2 and 4-pipe configurations
- Left or right hand arrangements
- Ease of installation
- Very low acoustic levels
- 2 way or 3 way ON / OFF valves
- Auxiliary drain pan
- Air intake with removable grid
- G2 filter

Operating limits

Entering water temperature	From 5 to 90 °C
Indoor air temperature	From 5 to 32 °C



ERP 2018: compliant following COMMISSION REGULATION (EU) No2016/2281.

Fan coils - floor-standing chassis (AC)



Optional controller. Advanced wired remote controller. PAW-FC-RC1



Optional controller. Wired remote controller with touch control. PAW-FC-907AC



Optional controller. Wired remote controller. PAW-FC-903AC

2-pipe - Left connection (PAW-)			FC2A-P010L	FC2A-P020L	FC2A-P030L	FC2A-P040L	FC2A-P050L	FC2A-P060L	FC2A-P070L	FC2A-P080L
2-pipe - Right connection (PAW-)			FC2A-P010R	FC2A-P020R	FC2A-P030R	FC2A-P040R	FC2A-P050R	FC2A-P060R	FC2A-P070R	FC2A-P080R
Total cooling capacity ¹⁾	Lo/Med/Hi	kW	0,7/1,0/1,5	0,7/1,2/1,7	1,0/2,0/2,5	1,2/2,4/3,2	1,7/3,2/4,6	2,7/4,6/5,8	3,4/6,1/7,3	4,6/6,1/8,1
Sensible cooling capacity ¹⁾	Lo/Med/Hi	kW	0,5/0,8/1,1	0,6/0,9/1,3	0,8/1,5/1,9	0,9/1,8/2,3	1,2/2,2/3,3	1,9/3,3/4,5	2,4/4,3/5,1	3,4/4,6/6,3
Water flow	Lo/Med/Hi	l/h	124/172/250	127/213/289	172/341/430	206/413/547	296/544/798	466/784/1003	587/1058/1252	798/1048/1400
Water pressure drop	Lo/Med/Hi	kPa	10,7/19,5/39,2	1,9/3,9/6,3	6,3/19,3/28,8	5,4/17,1/28,0	7,5/22,8/46,9	13,9/37,4/60,2	4,8/15,4/21,5	11,9/19,3/32,5
Heating capacity ²⁾	Lo/Med/Hi	kW	0,9/1,4/2,0	0,9/1,5/2,2	1,3/2,4/3,1	1,4/2,9/4,0	2,1/4,1/5,7	3,1/5,3/7,1	4,3/7,9/9,3	5,9/8,1/11,6
4-pipe - Left connection (PAW-)			FC4A-P010L	FC4A-P020L	FC4A-P030L	FC4A-P040L	FC4A-P050L	FC4A-P060L	FC4A-P070L	FC4A-P080L
4-pipe - Right connection (PAW-)			FC4A-P010R	FC4A-P020R	FC4A-P030R	FC4A-P040R	FC4A-P050R	FC4A-P060R	FC4A-P070R	FC4A-P080R
Total cooling capacity ¹⁾	Lo/Med/Hi	kW	0,7/0,9/1,3	0,6/1,1/1,6	1,0/1,9/2,4	1,1/2,3/3,0	1,7/3,0/4,3	2,6/4,4/5,6	3,3/5,9/6,9	4,5/5,9/8,0
Sensible cooling capacity ¹⁾	Lo/Med/Hi	kW	0,5/0,7/1,0	0,5/0,8/1,2	0,8/1,5/1,8	0,8/1,7/2,2	1,2/2,2/3,1	1,8/3,2/4,3	2,3/4,2/4,9	3,3/4,4/6,2
Water flow	Lo/Med/Hi	l/h	114/159/225	109/192/268	165/327/414	194/388/517	284/522/748	449/756/967	575/1019/1193	775/1020/1380
Water pressure drop	Lo/Med/Hi	kPa	8,3/15,2/29,0	1,5/3,4/5,6	3,0/9,5/14,4	6,4/22,3/36,8	4,2/12,8/25,1	10,2/27,7/44,5	5,9/17,9/24,4	19,3/31,1/53,6
Heating capacity ²⁾	Lo/Med/Hi	kW	0,5/0,7/1,0	0,6/0,9/1,1	1,0/1,4/1,6	0,9/1,6/2,1	1,5/2,3/3,0	1,9/2,9/3,7	2,7/3,6/4,3	3,9/5,6/7,1
Water flow	Lo/Med/Hi	l/h	79/127/178	100/146/190	164/232/274	160/273/354	251/401/508	325/505/633	456/626/736	673/963/1226
Water pressure drop	Lo/Med/Hi	kPa	1,9/3,5/5,6	1,5/3,2/5,3	5,1/9,0/11,9	9,2/26,5/42,7	10,7/24,6/29,5	20,3/43,9/52,9	67,2/117,9/137,8	33,1/63,7/75
Sound levels										
Global sound power	Lo/Med/Hi	dB(A)	33/40/49	31/43/50	30/45/52	30/44/51	34/46/56	38/51/58	43/56/61	50/55/64
Global sound pressure ³⁾	Lo/Med/Hi	dB(A)	24/31/40	22/34/41	21/36/43	21/35/42	25/37/47	29/42/49	34/47/52	41/46/55
Fan										
Number			1	1	1	2	2	2	2	3
Air flow 2-pipe	Lo/Med/Hi	m ³ /h	111/190/283	105/179/265	138/274/390	173/357/499	253/486/716	350/640/933	480/893/1064	660/936/1397
Air flow 4-pipe	Lo/Med/Hi	m ³ /h	95/168/253	89/161/241	132/263/369	162/335/467	242/466/671	334/614/885	470/859/1012	634/905/1370
Filter			G2	G2	G2	G2	G2	G2	G2	G2
Electrical data										
Power supply	Voltage	V	230	230	230	230	230	230	230	230
	Phase		Single phase	Single phase	Single phase	Single phase	Single phase	Single phase	Single phase	Single phase
	Frequency	Hz	50/60	50/60	50/60	50/60	50/60	50/60	50/60	50/60
Power consumption 2-pipe	Lo/Med/Hi	W	13/24/36	10/18/29	16/37/45	15/37/56	28/55/72	37/75/105	53/100/147	90/112/188
Power consumption 4-pipe	Lo/Med/Hi	W	13/24/36	10/18/28	16/37/44	15/37/55	28/54/70	37/74/104	53/99/145	90/112/188
Water connections										
Type			Female gas threaded	Female gas threaded	Female gas threaded	Female gas threaded	Female gas threaded	Female gas threaded	Female gas threaded	Female gas threaded
2-pipe		Inch	1/2	1/2	1/2	1/2	1/2	1/2	3/4	3/4
4-pipe	Cooling	Inch	1/2	1/2	1/2	1/2	1/2	1/2	3/4	3/4
	Heating	Inch	1/2	1/2	1/2	1/2	1/2	1/2	1/2	1/2
Dimension and weight										
Dimension ⁴⁾	H x W x D	mm	477 x 225 x 766	766 x 225 x 477	477 x 225 x 951	477 x 225 x 1136	477 x 225 x 1321	477 x 225 x 1506	575 x 225 x 1319	575 x 225 x 1506
Weight	2 / 4-pipes	kg	19/20	19/20	22/23	27/29	30/32	35/37	35/37	47/49
2-pipe RRP		€	437	454	500	564	638	693	815	1 064
4-pipe RRP		€	475	486	534	599	680	739	876	1 138

1) According to Eurovent standard. Air: 27 °C DB / 19 °C WB. Water in / out: 7 °C / 12 °C. 2) Air: 20 °C. Water in / out: 50 °C / 45 °C. 3) The sound pressure levels are based on (NR) characteristics of a room having volume of 100 m³ with reverberation of 0,5 seconds. 4) Without support feet.

Technical focus

- Cooling capacity from 0,7 to 8,1 kW
- Heating capacity from 0,7 to 10,3 kW
- 5-speed AC fan motor(s)

Main features and accessories

- 2 and 4-pipe configurations
- Left or right hand arrangements
- Ease of installation
- Very low acoustic levels
- 2 way or 3 way ON / OFF valves
- Auxiliary drain pan
- Air intake with removable grid
- G2 filter
- PAW-FC-FSF feet for floor-standing units

Operating limits	
Entering water temperature	From 5 to 90 °C
Indoor air temperature	From 5 to 32 °C





Fan coils - floor-standing chassis (EC)



Optional controller.
Wired remote controller with touch control.
PAW-FC-907EC



Optional controller.
Wired remote controller.
PAW-FC-903EC

2-pipe - Left connection (PAW-)			FC2E-P010L	FC2E-P020L	FC2E-P030L	FC2E-P040L	FC2E-P050L	FC2E-P060L	FC2E-P070L	FC2E-P080L
2-pipe - Right connection (PAW-)			FC2E-P010R	FC2E-P020R	FC2E-P030R	FC2E-P040R	FC2E-P050R	FC2E-P060R	FC2E-P070R	FC2E-P080R
Total cooling capacity ¹⁾	Lo/Med/Hi	kW	0,6/1,2/2,1	0,6/1,4/2,4	0,9/2,1/3,1	1,3/2,9/4,2	1,3/4,0/5,0	2,0/4,5/5,2	2,7/5,9/6,9	5,1/6,5/8,8
Sensible cooling capacity ¹⁾	Lo/Med/Hi	kW	0,5/1,1/1,9	0,5/1,1/1,9	0,6/1,6/2,4	1,0/2,1/3,0	1,1/3,0/3,7	1,4/3,5/4,0	2,0/4,3/5,2	3,7/4,8/6,6
Water flow	Lo/Med/Hi	l/h	107/210/356	110/237/406	148/354/532	230/506/722	231/685/743	341/767/800	463/1008/1098	879/1111/1254
Water pressure drop	Lo/Med/Hi	kPa	8,2/28,2/76,9	1,5/4,6/11,0	5,0/20,5/42,1	6,4/24,4/46,3	4,9/35,1/41,0	7,8/35,8/38,8	3,0/14,0/16,6	14,1/21,4/26,6
Heating capacity ²⁾	Lo/Med/Hi	kW	0,8/1,6/2,9	0,9/1,9/3,3	1,0/2,2/3,4	1,4/3,0/5,3	1,7/5,2/5,5	2,3/5,9/6,1	3,8/7,3/8,2	6,2/8,0/9,3
4-pipe - Left connection (PAW-)			FC4E-P010L	FC4E-P020L	FC4E-P030L	FC4E-P040L	FC4E-P050L	FC4E-P060L	FC4E-P070L	FC4E-P080L
4-pipe - Right connection (PAW-)			FC4E-P010R	FC4E-P020R	FC4E-P030R	FC4E-P040R	FC4E-P050R	FC4E-P060R	FC4E-P070R	FC4E-P080R
Total cooling capacity ¹⁾	Lo/Med/Hi	kW	0,5/1,1/1,9	0,6/1,2/2,2	0,8/1,9/2,9	1,2/2,7/4,0	1,2/3,6/4,6	1,8/4,1/4,9	2,6/5,1/6,4	5,0/6,2/9,6
Sensible cooling capacity ¹⁾	Lo/Med/Hi	kW	0,4/0,9/1,7	0,4/1,0/1,8	0,6/1,5/2,2	0,9/1,9/2,8	1,0/2,8/3,5	1,2/3,2/3,8	1,9/3,8/4,8	3,6/4,6/7,2
Water flow	Lo/Med/Hi	l/h	92/185/327	97/206/375	129/321/493	205/457/681	212/625/686	306/707/749	443/886/977	855/1070/1242
Water pressure drop	Lo/Med/Hi	kPa	5,8/20,1/59,2	1,3/3,7/9,7	4,0/9,2/19,7	6,3/29,6/60,1	2,5/17,9/21,3	5,1/24,3/27,2	3,5/13,6/16,5	22,9/33,9/44,3
Heating capacity ²⁾	Lo/Med/Hi	kW	0,4/0,8/1,4	0,6/0,9/1,5	1,0/1,4/1,8	1,2/2,0/2,8	1,6/2,4/2,5	1,4/2,9/3,1	2,5/3,4/3,6	4,5/5,9/6,9
Water flow	Lo/Med/Hi	l/h	76/140/235	95/161/255	166/243/304	204/350/483	267/416/438	233/503/531	434/583/614	767/1011/1194
Water pressure drop	Lo/Med/Hi	kPa	1,8/4,0/8,4	1,4/3,8/9,4	5,3/9,7/14,1	15,6/41,8/76,3	11,9/26,3/28,9	11,5/43,6/48,1	61,5/103,8/113,9	42,1/69,7/95,1
Sound levels										
Global sound power	Lo/Med/Hi	dB(A)	34/47/60	34/47/60	31/50/59	29/44/52	30/51/57	32/54/58	40/54/59	51/56/64
Global sound pressure ³⁾	Lo/Med/Hi	dB(A)	25/38/51	25/38/51	22/41/50	20/35/43	21/42/48	23/45/49	31/45/50	42/47/55
Fan										
Number			1	1	1	2	2	2	2	3
Air flow 2-pipe	Lo/Med/Hi	m ³ /h	108/228/417	98/234/413	145/380/585	170/412/678	203/645/816	245/737/912	350/850/1050	685/927/1398
Air flow 4-pipe	Lo/Med/Hi	m ³ /h	91/199/379	84/200/380	123/342/540	148/369/627	185/587/646	205/668/716	329/798/894	660/884/1079
Filter			G2	G2	G2	G2	G2	G2	G2	G2
Electrical data										
Power supply	Voltage	V	230	230	230	230	230	230	230	230
	Phase		Single phase	Single phase	Single phase	Single phase	Single phase	Single phase	Single phase	Single phase
	Frequency	Hz	50/60	50/60	50/60	50/60	50/60	50/60	50/60	50/60
Power consumption 2-pipe	Lo/Med/Hi	W	5/11/41	5/13/41	4/16/42	2/13/43	4/24/46	2/30/54	11/44/77	23/42/108
Power consumption 4-pipe	Lo/Med/Hi	W	5/11/39	5/13/40	6/15/40	2/12/42	2/23/44	2/28/52	11/43/75	22/41/116
Water connections										
Type			Female gas threaded	Female gas threaded	Female gas threaded	Female gas threaded	Female gas threaded	Female gas threaded	Female gas threaded	Female gas threaded
2-pipe		Inch	1/2	1/2	1/2	1/2	1/2	1/2	3/4	3/4
4-pipe	Cooling	Inch	1/2	1/2	1/2	1/2	1/2	1/2	3/4	3/4
	Heating	Inch	1/2	1/2	1/2	1/2	1/2	1/2	1/2	1/2
Dimension and weight										
Dimension ⁴⁾	H x W x D	mm	477 x 225 x 766	766 x 225 x 477	477 x 225 x 951	477 x 225 x 1136	477 x 225 x 1321	477 x 225 x 1506	575 x 225 x 1319	575 x 225 x 1506
Weight	2 / 4-pipes	kg	19/20	19/20	22/23	27/29	30/32	35/37	35/37	47/49
2-pipe RRP		€	637	650	718	788	887	948	1 058	1 338
4-pipe RRP		€	675	700	754	838	911	996	1 107	1 411

1) According to Eurovent standard. Air: 27 °C DB / 19 °C WB. Water in / out: 7 °C / 12 °C. 2) Air: 20 °C. Water in / out: 50 °C / 45 °C. 3) The sound pressure levels are based on (NR) characteristics of a room having volume of 100 m³ with reverberation of 0,5 seconds. 4) Without support feet.

Technical focus

- Cooling capacity from 0,5 to 9,6 kW
- Heating capacity from 0,6 to 13,6 kW
- Low energy consumption EC fan(s)

Main features and accessories

- 2 and 4-pipe configurations
- Left or right hand arrangements
- Ease of installation
- Very low acoustic levels
- 2 way or 3 way ON / OFF valves
- Auxiliary drain pan
- Air intake with removable grid
- G2 filter
- PAW-FC-FSF feet for floor-standing units

Operating limits

Entering water temperature	From 5 to 90 °C
Indoor air temperature	From 5 to 32 °C



Fan coils - wall-mounted (AC)



Optional controller.
Advanced wired
remote controller.
PAW-FC-RC1



Optional controller.
Wired remote
controller with
touch control.
PAW-FC-907AC



Optional controller.
Wired remote
controller.
PAW-FC-903AC



Infrared remote
supplied with IR
versions.
IR Controller

2-pipe			PAW-FC2A-K007	PAW-FC2A-K009	PAW-FC2A-K018	PAW-FC2A-K022
			PAW-FC2A-K007IR	PAW-FC2A-K009IR	PAW-FC2A-K018IR	PAW-FC2A-K022IR
Total cooling capacity ¹⁾	Lo/Med/Hi	kW	1,0/1,3/1,7	1,6/1,7/2,4	2,8/3,0/3,5	2,9/3,1/3,9
Sensible cooling capacity ¹⁾	Lo/Med/Hi	kW	0,7/1,0/1,2	1,2/1,3/1,9	2,1/2,3/2,7	2,3/2,5/3,1
Water flow	Lo/Med/Hi	l/h	172/231/287	270/291/418	483/508/609	502/535/669
Water pressure drop	Lo/Med/Hi	kPa	18,6/24,9/30,9	18,5/27,0/40,0	34,6/41,3/55,6	37,2/33,7/45,2
Heating capacity ²⁾	Lo/Med/Hi	kW	1,4/1,7/2,0	1,7/2,0/2,7	2,9/3,2/4,0	3,1/3,7/4,4
Sound levels						
Sound power	Lo/Med/Hi	dB(A)	45/49/51	47/52/57	49/53/59	56/59/63
Sound pressure ³⁾	Lo/Med/Hi	dB(A)	32/36/38	34/39/44	40/43/46	43/46/50
Fan						
Number			1	1	1	1
Air flow	Lo/Med/Hi	m ³ /h	282/321/360	367/413/551	532/592/680	617/709/850
Filter			G1	G1	G1	G1
Electrical data						
Power supply	Voltage	V	230	230	230	230
	Phase		Single phase	Single phase	Single phase	Single phase
	Frequency	Hz	50	50	50	50
Fuse rating		A	3	3	3	3
Power consumption	Lo/Med/Hi	W	39/42/62	30/47/59	44/50/55	50/55/70
Water connections						
Type			Female gas threaded	Female gas threaded	Female gas threaded	Female gas threaded
Water connections		Inch	1/2	1/2	1/2	1/2
Dimension and weight						
Dimension	HxWxD	mm	275 x 180 x 845	275 x 180 x 845	298 x 200 x 940	298 x 200 x 940
Weight		kg	11	11	13	13
RRP		€	509	535	630	754
RRP with IR Controller		€	550	577	671	794

1) According to Eurovent standard. Air: 27 °C DB / 19 °C WB. Water in / out: 7 °C / 12 °C. 2) According to Eurovent standard. Air: 20 °C. Water in / out: 45 °C / 40 °C. 3) Sound pressure considering a local of 100 m³ a reverberation time of 0,5 seconds and a distance of 1 m.

Technical focus

- 4 sizes
- Cooling capacity from 1,0 to 3,9 kW
- Heating capacity from 1,4 to 4,1 kW
- Version: 2-pipes, AC fan

Main features and accessories

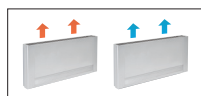
- 2 way or 3 way valve ON / OFF
- 3-speed AC fan motor
- Silent unit for optimum customer comfort
- Aesthetic design suitable for residential and hotel applications
- Compatible with IR controller (supplied with IR versions)
- Coil with hydrophilic fins to improve the condensate flow

Operating limits

Entering water temperature	From 5 to 60 °C
Indoor air temperature	From 6 to 40 °C



Smart fan coils



Built-in advanced thermostat.

		PAW-AAIR-200-2	PAW-AAIR-700-2	PAW-AAIR-900-2
Total cooling capacity	Lo/Med/Hi kW	0,2/0,3/0,6	0,8/1,0/1,2	1,2/1,5/1,7
Sensible cooling capacity	Lo/Med/Hi kW	0,2/0,3/0,5	0,6/0,9/1,1	1,1/1,4/1,6
Water flow	Lo/Med/Hi kg/h	40,0/59,0/95,0	129,0/178,0/207,0	198,0/261,0/300,0
Water pressure drop	Lo/Med/Hi kPa	0,4/2,0/2,9	1,0/2,0/2,0	6,0/9,0/12,0
Inlet water temperature	°C	10	10	10
Outlet water temperature	°C	15	15	15
Inlet air temperature	°C	27,0	27,0	27,0
Outlet air temperature	Lo/Med/Hi °C	15,0/17,0/18,0	14,0/16,0/17,0	16,0/17,0/18,0
Relative humidity of inlet air	%	47	47	47
Total heating capacity	Lo/Med/Hi kW	0,2/0,5/0,6	0,7/1,0/1,2	0,9/1,4/1,7
Water flow	Lo/Med/Hi kg/h	37,3/80,8/98,0	121,8/177,5/204,3	152,4/244,2/292,9
Water pressure drop	Lo/Med/Hi kPa	0,4/2,0/2,9	0,3/0,8/1,0	0,5/1,6/2,2
Inlet water temperature	°C	35	35	35
Outlet water temperature	°C	30	30	30
Inlet air temperature	°C	19,0	19,0	19,0
Outlet air temperature	Lo/Med/Hi °C	38,9/32,0/30,0	33,3/31,8/30,6	30,2/31,1/30,6
Air flow	Lo/Med/Hi m³/min	0,9/1,9/2,7	2,6/4,2/5,3	4,1/6,1/7,7
Maximum input power	Lo/Med/Hi W	7,0/9,0/13,0	14,0/18,0/22,0	16,0/20,0/24,0
Sound pressure	Lo/Med/Hi dB(A)	23/33/40	24/36/42	25/36/44
Dimension (HxWxD)	mm	735x579x129	935x579x129	1135x579x129
Net weight	kg	17	20	23
3 Ways valve included		Yes	Yes	Yes
Touch screen thermostat		Yes	Yes	Yes
RRP	€	See A2W price list	See A2W price list	See A2W price list

* Smart fan coils is produced by Innova.

Accessories	RRP €
PAW-AAIR-LEGS-1 Kits of 2 legs to protect the water pipings	See A2W price list

Accessories	RRP €
PAW-AAIR-RHCABLE Motor connection cable for units with hydraulic connections on the right	See A2W price list

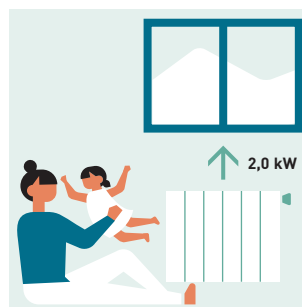
Stylish floor-standing fan coils with advanced controller

The slimline of Smart fan coils delivers high efficiency climate control.

With a depth of just under 130 mm they are at the cutting edge of the market. Blending easily into the home, Smart fan coil's elegant design and product refinements are clear to see in every detail.

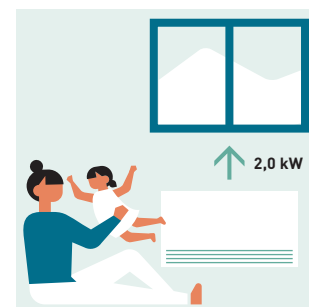
Exceptional ventilation efficiency means the motor uses considerably less energy (low wattage). The fan speed is continuously modulated by the temperature controller with proportional integral logic, with undoubted advantages for regulating the temperature and humidity in summer mode.

With standard cast radiators.



Water at 65 °C needed.

With Smart fan coil.



Water at 35 °C needed.

Technical focus

- 4 operation modes (auto, silent, night-time and maximum ventilation speed)
- Exclusive design
- Extremely compact (only 129 mm deep)
- Cooling and dehumidification functions possible (drain is needed)
- 3-way valve included (no overflow valve needed on the installation if more than 3 units installed)
- Touch screen thermostat

All temperature curves and capacity are available on www.panasonicproclub.com

PRO Club



Wired controllers for AC and EC fan coils

Advanced wired remote controller (AC)

PAW-FC-RC1

This advanced controller provides a higher level of comfort in heating. The sensor can be used as a water flow sensor, stopping the fan when the water temperature is low, avoiding cold drafts in winter.

Features:

- For 2-pipe and 4-pipe, AC fan
- Change Over function (cold draft prevention)
- Room thermostat
- 3 outputs, 230 V relays for fan control
- 2 outputs, 230 V relays for heating / cooling control
- Connection to BMS - Modbus RTU slave
- 1 DI for presence detection (key card switch)
- 1 AI for sensor



Wired remote controller (AC/EC)

Stylish and sophisticated design with backlit LCD display, is suitable for installation within a wide variety of locations such as office, hotel and residential applications. By connecting the controller to the range of AC/EC fan coils, the user can take advantage of the improved performance, higher levels of efficiency and thus improved energy savings.

PAW-FC-907AC

Features:

- For 2-pipe, AC fan
- Back lit LCD screen with touch control
- 3 speed control relay, for fan
- Economizer

PAW-FC-907EC

Features:

- For 2-pipe and 4-pipe, EC fan
- Back lit LCD screen with touch control
- Adjustable range EC fan control
- Economizer
- Connection to BMS via Modbus
- 1 DI for presence detection (key card switch)



Wired remote controller (AC/EC)

Feature rich and perfectly adapted to control AC/EC fan coils, the PAW-FC-903AC/EC is the addition for any fan coil. With intuitive user interface provided by the push button control and large LCD display, it will fit seamlessly with almost any location.

PAW-FC-903AC

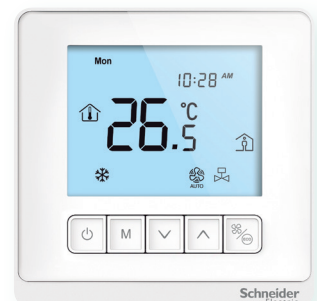
Features:

- For 2-pipe, AC fan
- Back lit LCD screen
- 3 speed control relay, for fan
- Economizer

PAW-FC-903EC

Features:

- For 2-pipe and 4-pipe, EC fan
- Back lit LCD screen
- Adjustable range EC fan control
- Economizer
- Connection to BMS via Modbus
- 1 DI for presence detection (key card switch)



Accessories and control

Wired remote controller for fan coil



Advanced wired remote controller for fan coil.

PAW-FC-RC1

125 €



Wired remote controller with touch control for 2-pipe and 4-pipe, EC fan coil (control + Modbus).

PAW-FC-907EC

232 €

Wired remote controller with touch control for 2-pipe, AC fan coil (control only).

PAW-FC-907AC

158 €



Wired remote controller for 2-pipe and 4-pipe, EC fan coil (control + Modbus).

PAW-FC-903EC

197 €

Wired remote controller for 2-pipe, AC fan coil (control only).

PAW-FC-903AC

88 €

Fan coil ceiling, floor-standing and ducted valve accessories

2 way valve + drain pan for 2-pipe ceiling, floor-standing and ducted models 010-060.

PAW-FC-2WY-11/55-1

122 €

2 way valve + drain pan for 2-pipe ceiling, floor-standing and ducted models 070-080.

PAW-FC-2WY-65/90-1

122 €

2 way valve + drain pan for 2-pipe ducted model F040.

PAW-FC-2WY-F040

122 €

3 way valve + drain pan for 2-pipe ceiling, floor-standing and ducted models 010-060.

PAW-FC-3WY-11/55-1

160 €

3 way valve + drain pan for 2-pipe ceiling, floor-standing and ducted models 070-080.

PAW-FC-3WY-65/90-1

195 €

3 way valve + drain pan for 2-pipe ducted model F040.

PAW-FC-3WY-F040

194 €

2 way valve + drain pan for 4-pipe ceiling, floor-standing and ducted models 010-060.

PAW-FC4-2WY-010

150 €

2 way valve + drain pan for 4-pipe ceiling, floor-standing and ducted models 070-080.

PAW-FC4-2WY-070

170 €

2 way valve + drain pan for 4-pipe ducted model F040.

PAW-FC4-2WY-F040

218 €

3 way valve + drain pan for 4-pipe ceiling, floor-standing and ducted model 010.

PAW-FC4-3WY-010

292 €

3 way valve + drain pan for 4-pipe ceiling, floor-standing and ducted models 020-060.

PAW-FC4-3WY-020

305 €

3 way valve + drain pan for 4-pipe ceiling, floor-standing and ducted models 070-080.

PAW-FC4-3WY-070

340 €

3 way valve + drain pan for 4-pipe ducted model F040.

PAW-FC4-3WY-F040

390 €

Fan coil high static ducted valve accessories

2 way valve + drain pan for 2-pipe high static ducted model E070.

PAW-FC2-2WY-E070

232 €

2 way valve + drain pan for 2-pipe high static ducted models E150-E180.

PAW-FC-2WY-150

244 €

2 way valve + drain pan for 2-pipe high static ducted models E210-E240.

PAW-FC2-2WY-E210

340 €

3 way valve + drain pan for 2-pipe high static ducted model E070.

PAW-FC2-3WY-E070

425 €

3 way valve + drain pan for 2-pipe high static ducted models E150-E180.

PAW-FC-3WY-150

449 €

3 way valve + drain pan for 2-pipe high static ducted models E210-E240.

PAW-FC2-3WY-E210

510 €

2 way valve + drain pan for 4-pipe high static ducted model E070.

PAW-FC4-2WY-E070

350 €

2 way valve + drain pan for 4-pipe high static ducted models E150-E180.

PAW-FC4-2WY-E150

376 €

2 way valve + drain pan for 4-pipe high static ducted models E210-E240.

PAW-FC4-2WY-E210

446 €

3 way valve + drain pan for 4-pipe high static ducted model E070.

PAW-FC4-3WY-E070

583 €

3 way valve + drain pan for 4-pipe high static ducted models E150-E180.

PAW-FC4-3WY-E150

608 €

3 way valve + drain pan for 4-pipe high static ducted models E210-E240.

PAW-FC4-3WY-E210

669 €

Fan coil cassette valve accessories

2 way valve + drain pan for 2-pipe cassette models U020-U040.

PAW-FC2-2WY-U020

256 €

2 way valve + drain pan for 2-pipe cassette models U050-U070.

PAW-FC2-2WY-U050

268 €

3 way valve + drain pan for 2-pipe cassette models U020-U040.

PAW-FC2-3WY-U020

280 €

3 way valve + drain pan for 2-pipe cassette models U050-U070.

PAW-FC2-3WY-U050

292 €

2 way valve + drain pan for 4-pipe cassette models U020-U040.

PAW-FC4-2WY-U020

476 €

2 way valve + drain pan for 4-pipe cassette models U050-U070.

PAW-FC4-2WY-U050

486 €

3 way valve + drain pan for 4-pipe cassette models U020-U040.

PAW-FC4-3WY-U020

500 €

3 way valve + drain pan for 4-pipe cassette models U050-U070.

PAW-FC4-3WY-U050

510 €

Fan coil wall-mounted valve accessories

2 way valve for 2-pipe wall-mounted K007-K022.

PAW-FC2-2WY-K007

110 €

3 way valve for 2-pipe wall-mounted k007-K022.

PAW-FC2-3WY-K007

170 €

Smart fan coil accessories

Kits of 2 legs to protect the water pipings.

PAW-AAIR-LEGS-1

See A2W price list

Motor connection cable for units with hydraulic connections on the right.

PAW-AAIR-RHCABLE

See A2W price list

Panasonic®

To find out how Panasonic cares for you,
log on to: www.aircon.panasonic.eu

Panasonic Marketing Europe GmbH.
South-East Europe Branch Office
1117 Budapest, Aliz utca 4. – Office Garden III.

Your partner:



Do not add or replace refrigerant other than the specified type. Manufacturer is not responsible for the damage and deterioration in safety due to usage of the other refrigerant.
The outdoor units in this catalogue contains fluorinated greenhouse gases with a GWP higher than 150.

Due to the ongoing innovation of our products, the specifications of this catalogue are valid barring typographic errors, and may be subject to minor modifications by the manufacturer without prior warning in order to improve the product. The total or partial reproduction of this catalogue is prohibited without the express authorisation of Panasonic Marketing Europe GmbH. This price list is showing recommended NET end-user prices. The prices are without VAT. The price list is valid from 01.11.2022. until 03.31.2023. or until withdrawal. Panasonic keeps the right to modify the prices without any prior notice.