

NEW SQUARE TANK

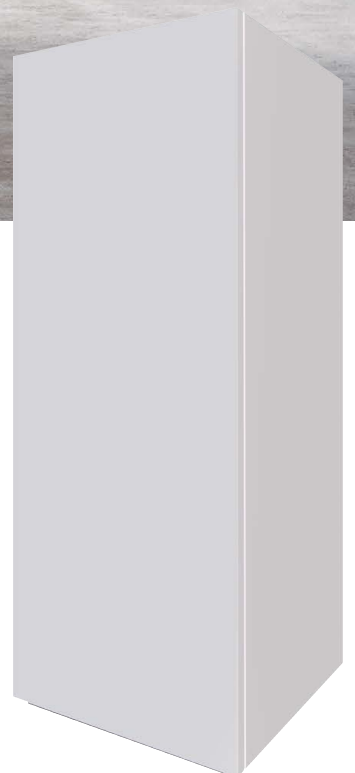


The Square tank is easy to install, nice looking, high efficiency for DHW production and for heating

The best option to combine with Panasonic Mono-bloc heat pump units.

The new Square tank is an extremely compact unit, with the dimensions of only 600x600x1550 mm.

The tank includes a highly efficient domestic hot water tank of 200 L, and it also includes a 3-way valve and a tank sensor.

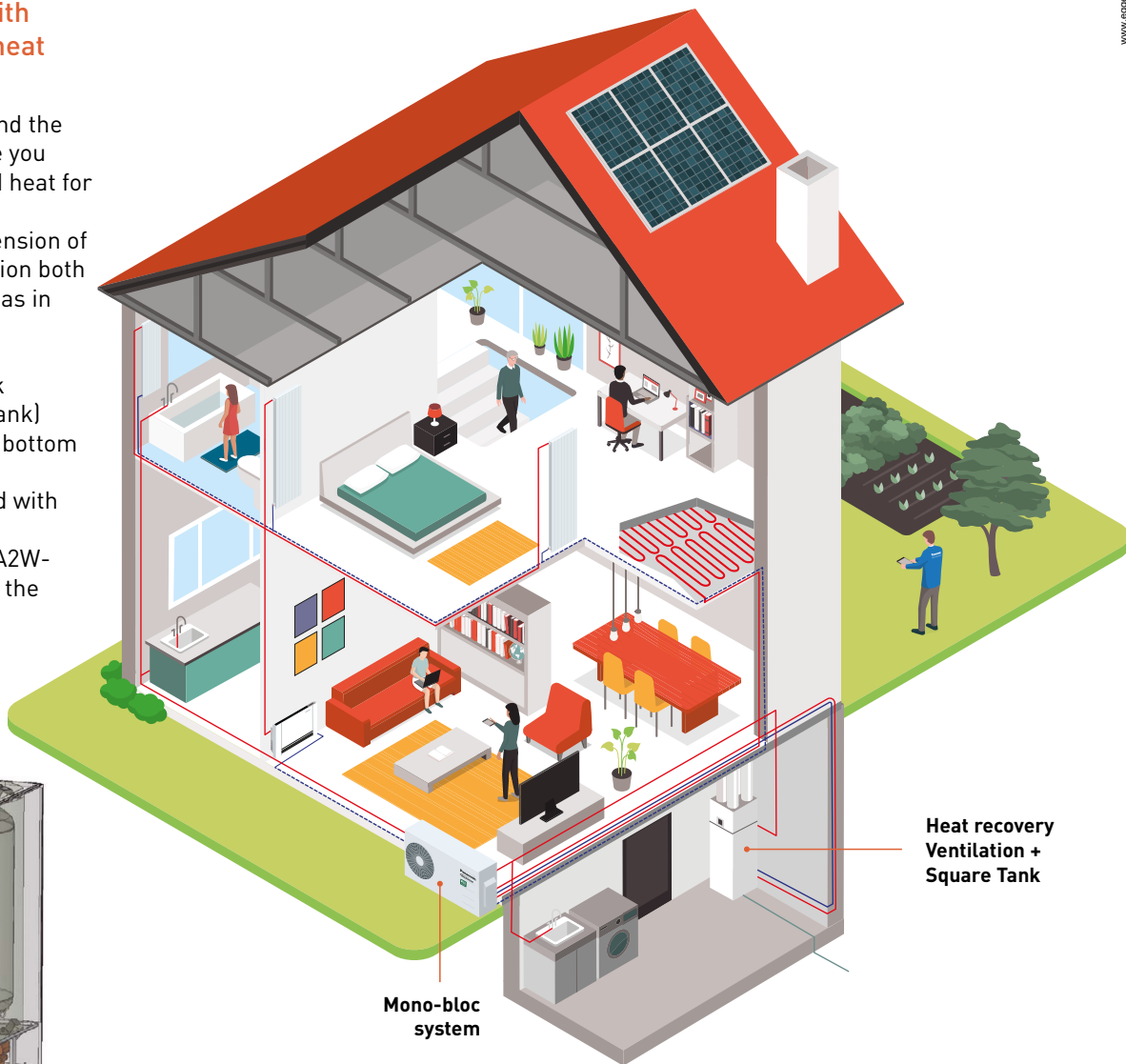
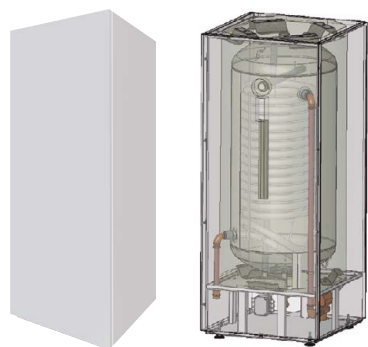


Square Tank is a perfect combination together with Panasonic Mono-bloc heat pump

The Panasonic Mono-bloc and the tank as a combo will provide you with domestic hot water and heat for your heating system.

Thanks to the compact dimension of the tank, it is a perfect solution both in new built houses, as well as in older houses.

- 200 L DHW Enamelled tank
- High energy efficiency (B rank)
- All pipe connections at the bottom
- 3-way valve Built-in
- Magnesium anode included with access from the front side
- The Ventilation unit (PAW-A2W-VENTA) can be installed on the Square tank



Square Tank

Model		PAW-TA20C1E5C
Water volume	L	200
Maximum water temperature	°C	95
Dimension (Height / Diameter)	mm	1550 x 600 x 600
Weight / filled with water	kg	134 / 327
Material inside tank		Enamelled
Exchange surface	m ²	1,83
Energy loss at 65 °C ¹⁾	kWh/24h	1,37
3 way valve accessory PAW-3WYVLV-HW or CZ-NV1		Built-in 3 way valve
20 m temperature sensor cable included		Yes
Energy losses	W	57
Energy Efficiency Class (from A+ to F)		B
Warranty of the inner vessel		5 Years
Maintenance required		Every 2 years

1) Insulated tested under EN12897. ** Enamelled Tanks and Square Tank are produced by AEmail.

Panasonic®

To find out how Panasonic cares for you, log on to:
www.aircon.panasonic.eu

Panasonic Marketing Europe GmbH
Panasonic Air Conditioning
Hagenauer Strasse 43, 65203 Wiesbaden, Germany

heating & cooling solutions

