

# NEW PACi 90x90 CASSETTE

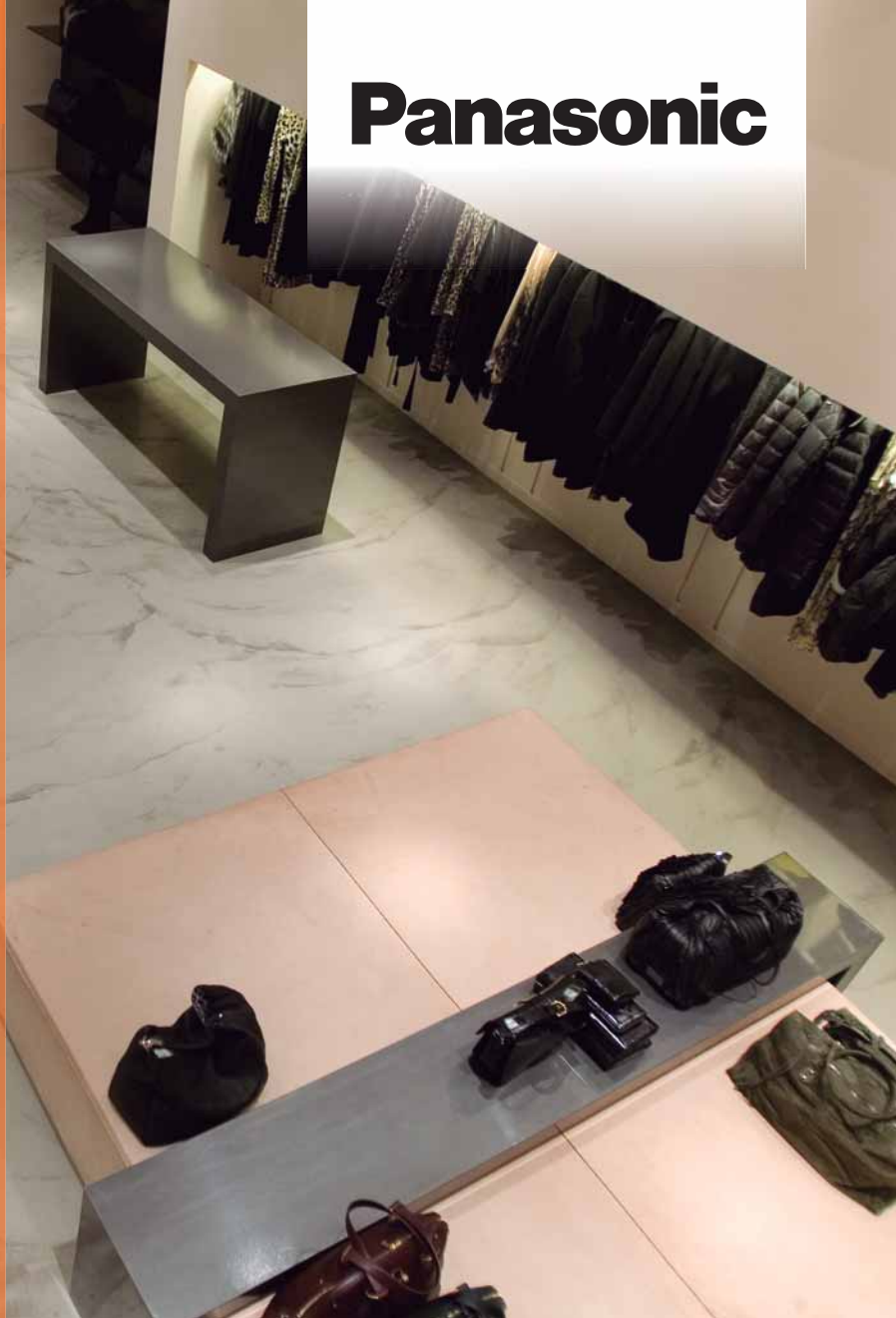
# Panasonic



**4 way 90X90 Cassette  
PACi Standard and Elite  
Inverter+. High heating  
capacity at -7°C**

The 4 Way 90x90 Cassette incorporates many new benefits thanks to advances in design and technology.

**PACi**  
ELITE / STANDARD



**New wired remote controller with Econavi function control**  
Easy to use, attractive, clear design, with new demand control functions and energy consumption display! This useful feature makes this remote control unique!  
The new CZ-RTC3 wired remote control is ideal for integration into the most demanding interior architectures.  
The touch panel features a very sleek and easy to use display, which with its compact display is only 120mm x 120mm x 16mm.



**New Econavi Sensor**  
The all new Econavi Sensor detects presence in the room, and quietly adapts the PACi or VRF air conditioning system in order to improve comfort and maximise energy savings.

## 360° Air Flow 4 Way 90x90 Cassette PACi Standard and Elite

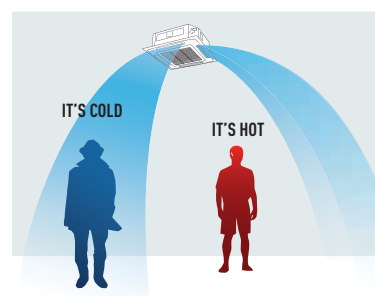
### 4 Way 90x90 Cassette. Wide & Comfortable Airflow

This proprietary design provides a wide and very comfortable airflow. The cassette's wide-angle discharge outlets and flaps are larger in the middle, featuring a shape that was selected based on geometrics and testing of actual prototype units. Air coming out of the center of the discharge outlets travels farther. From the sides of each outlet, where the openings are larger, airflow spreads out to reach the corners of the room. Air is discharged across a wide area from the four sides of the unit. The curves on the room temperature distribution graph expand gently out through 360° in a circle centered on the indoor unit.

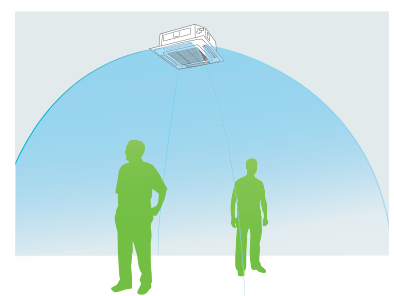
### New 360° Air Flow for improved comfort

The new air-outlet and flap design creates a soft and gentle air flow which circulates throughout the whole space and provides an even temperature distribution in the room.

#### CURRENT MODEL



#### 360° AIR FLOW



**SEASONAL  
EFFICIENCY (SCOP)**



# 4 WAY 90x90 CASSETTE PACi STANDARD AND ELITE INVERTER+

HIGH HEATING CAPACITY AT -7°C

360° air flow



## OPTIONAL CONTROLLERS

Wired remote controller  
CZ-RT1C3



Timer remote controller  
CZ-RT1C2



Wireless remote controller  
CZ-RWSU2



Simplified remote controller  
CZ-RE1C2



Compatible with all Panasonic connectivity solutions. For detailed information go to the Control Systems section.

Panel: CZ-KPU21



U-60PE1E5 U-50PE1E5



U-100PE1E5 U-60PE1E8A  
U-125PE1E5 U-71PE1E8A  
U-100PE1E8 U-71PE1E8A  
U-125PE1E8



U-140PE1E8 U-100PE1E8A  
U-100PE1E8A U-125PE1E8A  
U-140PE1E8A

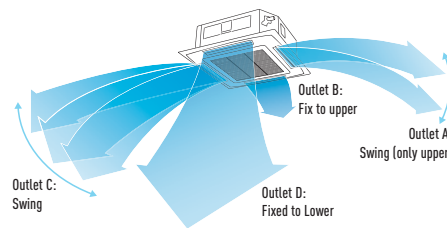
- New Circle Flow Flap for more even temperature distribution
- Higher efficiency split fin
- New DC fan motor
- Highly efficient and silent turbo fan
- Individual flap control for flexible air flow direction
- Easy to clean suction grill & flap
- Special adjustment for high ceiling application
- DC FAN for better efficiency and control

## Flexible 3D air-flow control

Comfort air flow control & proper energy use. Flexible Air flow direction control by individual flap control:

- 4 Flaps can be controlled individually (by standard wired remote controller\*).
- Versatile air flow control to cover a wide variety of demands.

\* Pre-setting is required for this function at System Test-run procedure.



Internet Control Ready  
CONTROL YOUR AIR CONDITIONING FROM EVERYWHERE  
INTERNET CONTROL Reference PA-RC2-WIFI-1

Control your air conditioning from wherever you are at home. Control your comfort and efficiency with the lowest energy consumption

Panasonic has always offered its customers the most efficient Heat Pumps and Air Conditioners. Now it has taken a step forward and presents a control solution taking advantage of the latest Cloud Technology to enable you to manage your climate system from anywhere in the world.

Control your environment from your smartphone, tablet computer, any Android device or from a PC with Internet access using this add-on service. Offering the same functions as if you were at home: start/stop, Mode Operation, Set Temperature, Room Temperature etc. Experience the new, advanced functionality provided by Panasonic to achieve the best comfort and efficiency with the lowest energy consumption.

4 WAY 90x90 CASSETTE PACi STANDARD AND ELITE INVERTER+	Cooling			Heating			Sound pressure level <sup>3)</sup> Cool — Heat (Hi / Lo / S-Lo) dB(A)	Dimensions (In) mm	Dimensions (Out) mm	Operating range Cool — Heat Min / Max °C
	Capacity Nom (Min - Max) kW	ESEER Nominal W/W	Power input Nominal (Min - Max) kW	Capacity Nom (Min - Max) / at -7°C kW	SCOP Nominal W/W	Power input Nominal (Min - Max) kW				
<b>4 Way 90x90 Cassette PACi Standard Inverter+</b>										
KIT-60PUY1E5A*	6,0 (2,0 - 7,0)	6,8 <b>A++</b>	1,690 (0,325 - 2,500)	6,0 (1,8 - 7,0) / 4,39	4,0 <b>A+</b>	1,480 (0,275 - 2,155)	36 / 31 / 28 — 36 / 31 / 28	256 x 840 x 840	569 x 790 x 285	-10 / +43 — -15 / +24
KIT-71PUY1E5A*	7,1 (2,0 - 7,7)	6,3 <b>A++</b>	2,190 (0,325 - 2,800)	7,1 (1,8 - 8,1) / 4,32	4,0 <b>A+</b>	1,880 (0,275 - 2,510)	37 / 31 / 28 — 37 / 31 / 28	256 x 840 x 840	569 x 790 x 285	-10 / +43 — -15 / +24
KIT-100PUY1E5A*	10,0	6,4 <b>A++</b>	3,220 (0,530 - 4,200)	10,0 (2,1 - 13,8) / 7,22	4,0 <b>A+</b>	2,630 (0,410 - 4,000)	44 / 38 / 32 — 44 / 38 / 32	319 x 840 x 840	996 x 940 x 340	-10 / +43 — -15 / +24
KIT-125PUY1E5A*	12,5 (3,8 - 13,5)	3,7 <sup>1)</sup>	4,020 (0,900 - 5,000)	12,5 (3,4 - 15,0) / 9,14	3,4 <sup>2)</sup>	3,290 (0,730 - 4,400)	45 / 39 / 33 — 45 / 39 / 33	319 x 840 x 840	996 x 940 x 340	-10 / +43 — -15 / +24
KIT-100PUY1E8A*	10,0 (2,7 - 11,5)	6,2 <b>A++</b>	3,220 (0,530 - 4,200)	10,0 (2,1 - 13,8) / 7,22	4,0 <b>A+</b>	2,630 (0,410 - 4,000)	44 / 38 / 32 — 44 / 38 / 32	319 x 840 x 840	996 x 940 x 340	-10 / +43 — -15 / +24
KIT-125PUY1E8A*	12,5 (3,8 - 13,5)	3,7 <sup>1)</sup>	4,020 (0,900 - 5,000)	12,5 (3,4 - 15,0) / 9,14	3,4 <sup>2)</sup>	3,290 (0,730 - 4,400)	45 / 39 / 33 — 45 / 39 / 33	319 x 840 x 840	996 x 940 x 340	-10 / +43 — -15 / +24
KIT-140PUY1E8A*	14,0 (3,3 - 15,5)	3,8 <sup>1)</sup>	4,360 (0,840 - 6,000)	14,0 (4,1 - 16,0) / 11,68	3,5 <sup>2)</sup>	3,600 (0,900 - 5,200)	46 / 40 / 34 — 46 / 40 / 34	319 x 840 x 840	1.416 x 940 x 340	-10 / +43 — -15 / +24
<b>4 Way 90x90 Cassette PACi Elite Inverter+</b>										
KIT-50PUY1E5A*	5,0 (1,5 - 5,6)	6,5 <b>A++</b>	1,350 (0,260 - 2,000)	5,6 (1,5 - 6,5) / 3,62	3,8 <b>A</b>	1,430 (0,220 - 2,300)	32 / 29 / 27 — 32 / 29 / 27	256 x 840 x 840	569 x 790 x 285	-15 / +46 — -20 / +24
KIT-60PUY1E5A*	6,0 (2,5 - 7,1)	7,4 <b>A++</b>	1,480 (0,450 - 2,000)	7,0 (2,0 - 8,0) / 5,85	4,1 <b>A+</b>	1,810 (0,400 - 2,480)	36 / 31 / 28 — 36 / 31 / 28	256 x 840 x 840	996 x 940 x 340	-15 / +46 — -20 / +24
KIT-71PUY1E5A*	7,1 (2,5 - 8,0)	7,4 <b>A++</b>	1,800 (0,450 - 2,650)	8,0 (2,0 - 9,0) / 6,69	4,1 <b>A+</b>	2,000 (0,400 - 2,900)	37 / 31 / 28 — 37 / 31 / 28	256 x 840 x 840	996 x 940 x 340	-15 / +46 — -20 / +24
KIT-100PUY1E5A*	10,0 (3,3 - 12,5)	6,6 <b>A++</b>	2,380 (0,840 - 3,700)	11,2 (4,1 - 14,0) / 9,63	4,2 <b>A+</b>	2,600 (0,900 - 4,400)	44 / 38 / 32 — 44 / 38 / 32	319 x 840 x 840	1.416 x 940 x 340	-15 / +46 — -20 / +24
KIT-125PUY1E5A*	12,5 (3,3 - 14,0)	4,3 <sup>1)</sup>	3,470 (0,840 - 4,600)	14,0 (4,1 - 16,0) / 11,80	3,6 <sup>2)</sup>	3,500 (0,900 - 5,200)	45 / 39 / 33 — 45 / 39 / 33	319 x 840 x 840	1.416 x 940 x 340	-15 / +46 — -20 / +24
KIT-140PUY1E5A*	14,0 (3,3 - 15,5)	3,8 <sup>1)</sup>	4,310 (0,840 - 6,000)	16,0 (4,1 - 18,0) / 13,98	3,4 <sup>2)</sup>	4,330 (0,900 - 5,900)	46 / 40 / 34 — 46 / 40 / 34	319 x 840 x 840	1.416 x 940 x 340	-15 / +46 — -20 / +24
KIT-71PUY1E8A*	7,1 (2,5 - 8,0)	6,8 <b>A++</b>	1,800 (0,450 - 2,650)	8,0 (2,8 - 9,0) / 6,69	4,0 <b>A+</b>	2,000 (0,500 - 2,900)	37 / 31 / 28 — 37 / 31 / 28	256 x 840 x 840	996 x 940 x 340	-15 / +46 — -20 / +24
KIT-100PUY1E8A*	10,0 (3,3 - 12,5)	6,5 <b>A++</b>	2,380 (0,840 - 3,700)	11,2 (4,1 - 14,0) / 9,63	4,2 <b>A+</b>	2,600 (0,900 - 4,400)	44 / 38 / 32 — 44 / 38 / 32	319 x 840 x 840	1.416 x 940 x 340	-15 / +46 — -20 / +24
KIT-125PUY1E8A*	12,5 (3,3 - 14,0)	4,3 <sup>1)</sup>	3,470 (0,840 - 4,600)	14,0 (4,1 - 16,0) / 11,80	3,6 <sup>2)</sup>	3,500 (0,900 - 5,200)	45 / 39 / 33 — 45 / 39 / 33	319 x 840 x 840	1.416 x 940 x 340	-15 / +46 — -20 / +24
KIT-140PUY1E8A*	14,0 (3,3 - 15,5)	3,8 <sup>1)</sup>	4,310 (0,840 - 6,000)	16,0 (4,1 - 18,0) / 13,98	3,4 <sup>2)</sup>	4,330 (0,900 - 5,900)	46 / 40 / 34 — 46 / 40 / 34	319 x 840 x 840	1.416 x 940 x 340	-15 / +46 — -20 / +24

Rating Conditions: Cooling Indoor 27°C DB / 19°C WB. Cooling Outdoor 35°C DB / 24°C WB. Heating Indoor 20°C DB. Heating Outdoor 7°C DB / 6°C WB. (DB: Dry Bulb; WB: Wet Bulb). // Specifications subject to change without notice.  
 1) ESEER is calculated in base Eurovent IPLV for SBEM for U1 indoor unit SEER=a(EER25)+b(EER50)+c(EER75)+d(EER100) where EER25, EER50, EER75 and EER100 are the EER measured value at 25%, 50%, 75% and 100% part load for temperatures 20, 25, 30 and 35°C DB, respectively. a, b, c and d are values assigned for an office type. These values are given as a=0,2, b=0,36, c=0,32 and d=0,03. The internal temperatures are taken at 27°C DB and 19°C WB. 2) SCOP is calculated in base Eurovent IPLV for SBEM with U1 indoor unit including defrost correction factor. 3) The Sound pressure level of the units shows the value measured of a position 1 meter in front of the main body and 1,5 m from the ground. The sound pressure is measured in accordance with Eurovent 6/C/006-97 specification. \* Available from May 2014.  
 For detailed information about ErP, please visit our page <http://www.ptc.panasonic.eu>

<p><b>Internet Control Ready</b> INTERNET CONTROL</p> <p>Internet Control is a next generation system providing a user-friendly remote control of air conditioning or heat pump units from everywhere, using a simple Android or iOS smartphone, tablet or PC via internet.</p>	<p><b>A class energy saving</b> INVERTER+</p> <p>Inverter+ products improve on the characteristics of standard Inverter range by over 20%. This means 20% less consumption and 20% off your electric bill. A Inverter plus is also A class on cooling and heating mode.</p>	<p><b>7.4 A+++ SEER</b> SEASONAL ENERGY EFFICIENCY RATIO</p> <p>Exceptional Seasonal Cooling Efficiency based on the new ErP regulation. Higher the SEER ratings mean greater efficiency. Save all the year while cooling! For KIT-60PUY1E5 and KIT-71PUY1E5.</p>	<p><b>4.1 A+ SCOP</b> SEASONAL COEFFICIENT OF PERFORMANCE</p> <p>Exceptional Seasonal Heating Efficiency based on the new ErP regulation. Higher the SCOP ratings mean greater efficiency. Save all the year while heating! For KIT-60PUY1E5 and KIT-71PUY1E5.</p>	<p><b>Down to -15°C in cooling mode</b> OUTDOOR TEMPERATURE</p> <p>The air conditioner works in cooling only mode when an outdoor temperature of -15°C. For Elite range.</p>	<p><b>Down to -20°C in heating mode</b> OUTDOOR TEMPERATURE</p> <p>The air conditioner works in heat pump mode even when outdoor temperatures are as low as low as -20°C. For Elite range.</p>	<p><b>Easy control by BMS</b> CONNECTIVITY</p> <p>The communication port is integrated into the indoor unit and provides easy connection to, and control of, your Panasonic heat pump to your home or building management system.</p>	<p><b>Possible to use on R22 pipings</b> R22 RENEWAL</p> <p>The Panasonic renewal system allows good quality existing R22 pipe work to be re-used whilst installing new high efficiency R410A systems.</p>	<p><b>5 year compressor warranty</b></p> <p>We guarantee the compressors in the entire range for five years.</p>
---	---	---	--	--	--	---	--	--

# Panasonic

To find out how Panasonic cares for you, log on to: [www.aircon.panasonic.eu](http://www.aircon.panasonic.eu)

Panasonic Marketing Europe GmbH  
Panasonic Air Conditioning  
Hagenauer Strasse 43, 65203 Wiesbaden, Germany

heatingandcoolingsystems